

NSZ-800 (SZ6000) 系列体视显微镜 Stereoscopic Microscope NSZ-800 (SZ6000) Series



性能

- NSZ系列体视显微镜采用无限远平行光学系统，拥有无与伦比的光学性能。
- 超薄型反射和透射式LED光源，照明均匀，平均使用寿命6000小时。
- 以丰富、完备的功能部件来满足各项功能的扩展，是科研、工业、生物和医疗等领域最理想的助手。

Features

- Unrivaled optical performance with infinity parallel optical system.
- Providing even illumination and 6000 hours life expectancy with ultra-thin LED illumination for both incident and transmitted light.
- With complete accessories, it can be used widely for scientific research, industry, biological and medical field.

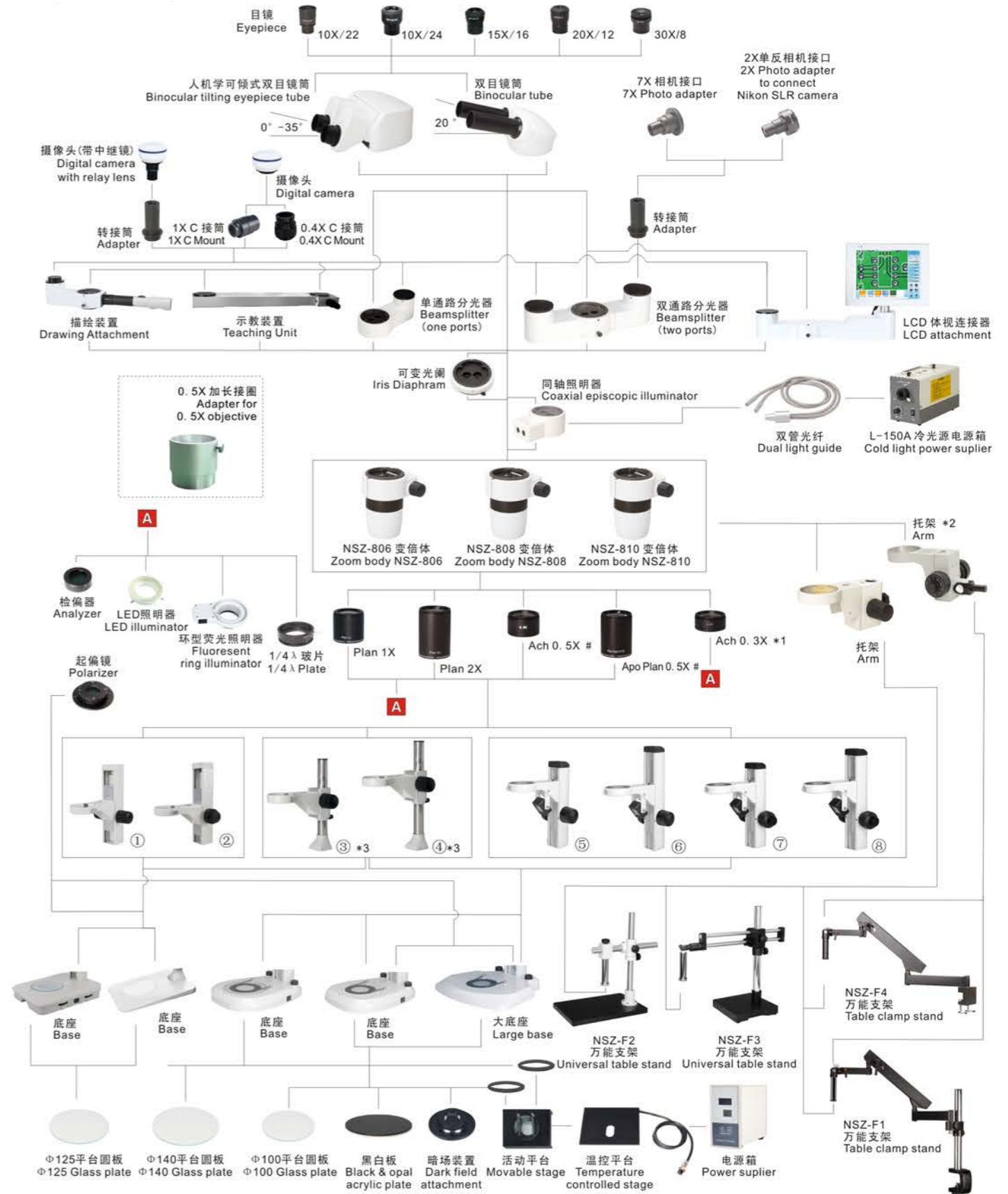
技术参数 Specification

NSZ-800

		NSZ-806	NSZ-808	NSZ-810
光学系统 Optical System	平行双光路变倍系统 Parallel optical zoom system	●	●	●
观察头 Viewing Head	双目观察头，倾角 20°，瞳距 55-75mm Binocular head, 20° inclined, interpupillary distance 55-75mm 双目观察头，倾角 0°-35°可调，瞳距 55-75mm，可提升眼点高度到 137mm Tilting binocular eyepiece tube, 0-35° inclined, interpupillary distance 55-75mm	●	●	●
目镜 Eyepiece	EW10X/Φ22 (NSZ-800)	●	●	●
	WF10X/Φ24 (SZ6000)	●	●	●
	WF15X/Φ16	○	○	○
	WF20X/Φ12	○	○	○
物镜 Objective	WF30X	○	○	○
	变倍物镜 Zoom	●	●	●
	0.8X~5X	●	●	●
	0.8X~6.4X	○	○	○
	0.8X~8X	○	○	○
	主物镜 Objective	1X 平场消色差物镜 WD: 78mm 1X Plan achromatic objective 0.3X 消色差物镜 WD: 276mm 0.3X Achromatic objective 0.5X 消色差物镜 WD: 195mm 0.5X Achromatic objective 2X 平场消色差物镜 WD: 32.5mm 2X Plan achromatic objective 0.5X 平场复消色差物镜 WD: 126mm 0.5X Plan apochromatic objective	●	●
连续变倍比 Zoom Ratio	1:6 1:8 1:10	●	●	●
工作距离 Working Distance	78mm	●	●	●
调焦行程 Focusing Range	105mm	●	●	●
照明系统 Illumination	透射、反射 LED 照明，亮度可调 Transmission & reflection LED illumination, brightness adjustable	●	●	●
选购配置 Optional	同轴照明装置 Coaxial illumination	○	○	○
	荧光装置 Epi-fluorescent attachment	○	○	○
	暗场装置 Dark field attachment	○	○	○
	简易偏光装置 Simple polarization set	○	○	○
	可变光栏 Iris diaphragm	○	○	○
	单端口分光器 Beamsplitter (one port)	○	○	○
	双端口分光器 Beamsplitter (two ports)	○	○	○
	摄影、摄像装置 Photography & video attachment	○	○	○
	活动平台 Moveable stage	○	○	○
	热台 Temperature controlled stage	○	○	○
万能支架 Universal table stand/Table clamp stand	○	○	○	
同轴粗微调机架 Coaxial coarse & fine focusing unit	○	○	○	
双管光纤冷光源 Cold light illumination with dual light guide	○	○	○	
显示屏附件 LCD Attachment	○	○	○	

注：●为标配，○为选购配件 Note: ● Standard Outfit, ○ Optional
“*”为0.5X、2X选配 “*” Optional for 0.5X、2X

系统配置图 System Diagram



注：*1 0.3X大物镜仅与NSZ-F1、NSZ-F2、NSZ-F3、NSZ-F4支架可配用。
*2 表示与NSZ-F1、NSZ-F4相连接时需取下连杆。
*3 配置立柱时，不含电器。
1/4λ玻片与同轴照明器配合使用。
Note: *1 Objective 0.3X only for NSZ-F1, NSZ-F2, NSZ-F3, NSZ-F4 stand.
*2 Take away the connecting column of NSZ-F1 and NSZ-F4.
*3 Without illumination.
1/4λ Plate only can be used with coaxial episcopic illuminator.

长度 Length	(1)	(2)	(3)	(4)	(5)	(6)	(7)	(8)
同轴粗微调 Coaxial coarse & fine For NSZ-810		√					√	√

NSZ-608T 系列连续变倍体视显微镜 Zoom Stereo Microscope NSZ-608T Series

性能

- 同级别中领先的机型，变倍比 1:8.3，变焦范围 0.6X-5X，可进行广范围的观察，视野宽广，最大可达 $\Phi 76\text{mm}$ 。
- 高性能光学部件，可形成清晰的高对比度图像，三目摄像无重像。
- 符合人机工程学设计，可减轻长时间观察而产生的疲劳。
- 品种齐全的目镜和辅助物镜，丰富的附件可满足各项功能的扩展，特别适合工业组装和检验，以及教学和基础研究。

Features

- The leading role of the same level microscopes, wide range observation with zoom range 0.6X-5X, zoom ratio 1:8.3 and visual field up to $\Phi 76\text{mm}$.
- With high quality optical components, providing sharp and striking contrast image and no ghost image.
- Ease the tiredness with ergonomic design.
- With Complete eyepieces, auxiliary objectives and other accessories, it is an ideal instrument for industry assembling, inspection and teaching field.



光路切换杆
Optical path switching lever



工作距离
Working distance 115mm

技术参数 Specification

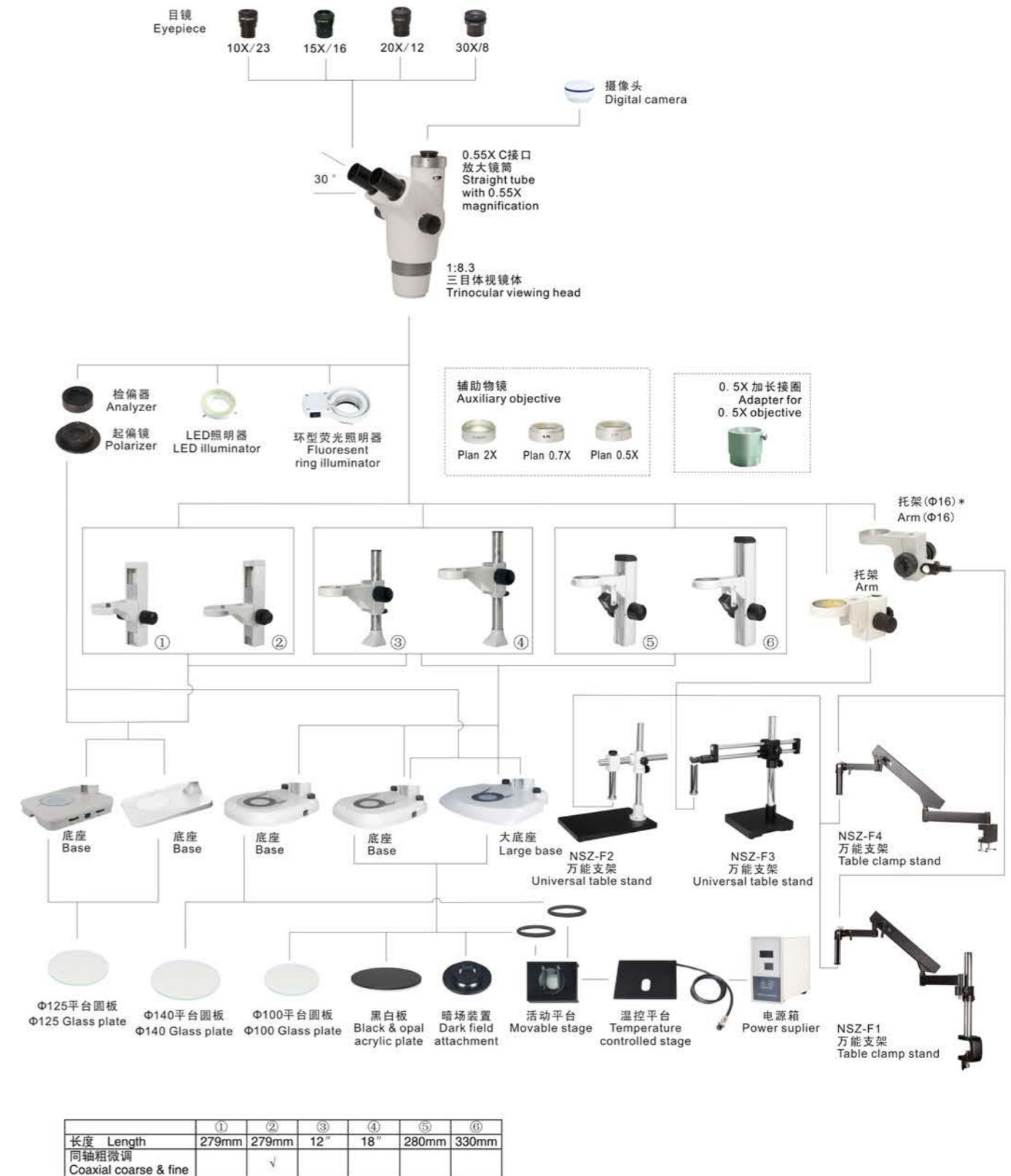
NSZ-608T (A)

		NSZ-608T(A)	NSZ-608T(B)
观察镜筒 Viewing Tube	三目视镜体，倾角 30° Trinocular viewing head, Inclined at 30°	●	●
视度可调目镜 Diopter Adjustment Eyepiece	大视场平场目镜 WF10X/ $\Phi 23$	●	●
	WF15X/ $\Phi 16$	○	○
	WF20X/ $\Phi 12$	○	○
	WF30X/ $\Phi 8$	○	○
变倍物镜 Zoom Objective	0.6X-5X	●	●
变倍比 Zoom Ratio	1: 8.3	●	●
工作距离 Working Distance	115mm	●	●
瞳距 Interpupillary Distance	55-75mm	●	●
辅助物镜 Auxiliary objective	0.5X WD: 220mm	○	○
	0.7X WD: 125mm	○	○
	2X WD: 45mm	○	○
载物台插入圆板 Stage Insert	直径 125mm 透明玻璃盘 Glass plate, Diameter 125mm	●	●
	直径 100mm 透明玻璃盘 Glass plate, Diameter 100mm	●	●
	直径 125mm 黑白板 Opal & black acrylic plate, Diameter 125mm	●	●
	直径 100mm 黑白板 Opal & black acrylic plate, Diameter 100mm	●	●
调焦行程 Focusing Range	105mm	●	●
光源 Illumination	反射光照明 100V-240V/LED Incident Illumination 100V-240V/LED	●	●
	透射光照明 100V-240V/LED	●	●
	Transmitted Illumination 100V-240V/LED	●	●
摄像镜筒 Video Adapter	0.55X C 接口 0.55X C Mount	●	●
	1X C 接口 1X C Mount	○	○

注：●为标准配置，○为选购配件

Note: ● Standard Outfit, ○ Optional

系统配置图 System Diagram



注：* 表示与NSZ-F1、NSZ-F4相连接时需取下连杆
Note: * Take away the connecting column of NSZ-F1 and NSZ-F4.

JSZ8系列连续变倍体视显微镜 Zoom Stereo Microscope JSZ8 Series

性能

- 同级别中领先的机型，变焦范围0.6X-5X可进行广范围的观察，视野宽广，最大可达Φ76mm。
- 高性能光学部件，可形成清晰的高对比度图像，并确保大景深下图像的平场度。
- 符合人机工程学设计，可减轻长时间观察而产生的疲劳。
- 品种齐全的目镜和辅助物镜，丰富的附件可满足各项功能的扩展，特别适合工业组装和检验，以及教学和基础研究。

Features

- The leading roles of same level microscope, wide range observation with zoom range 0.6X-5X and visual field up to Φ76mm.
- With high quality optical components, providing sharp and striking contrast image and ensure flat image at large depth of field.
- Ease the tiredness with ergonomic design.
- With Complete eyepieces, objectives and accessories, it is an ideal instrument for industry assembling, inspection and teaching field.



JSZ8 其他 Others
大景深 Large Depth of Field



JSZ8B



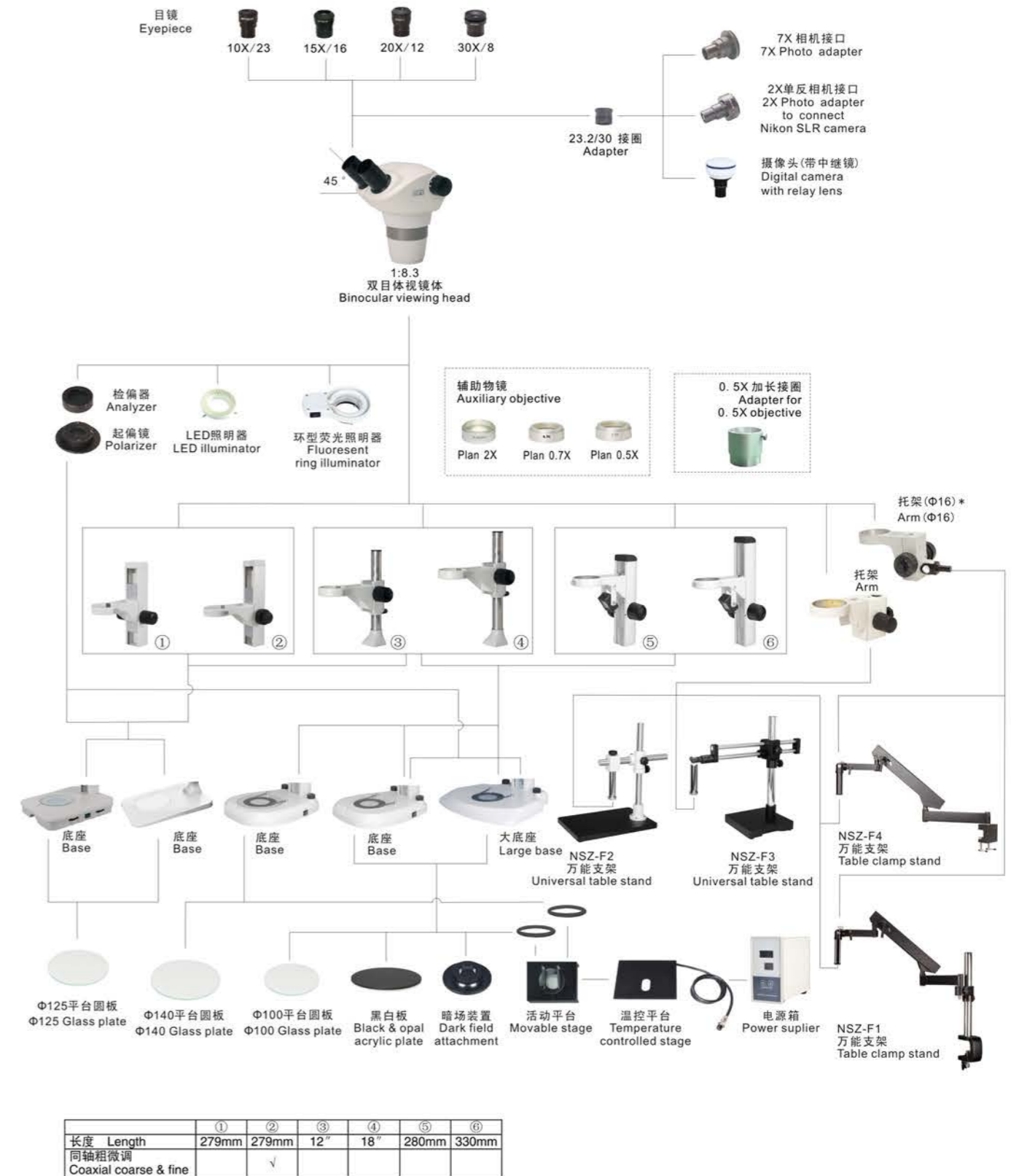
JSZ8A

技术参数 Specification

		JSZ8A	JSZ8B
观察镜筒 Viewing Tube	双目体视镜体，倾角 45° Binocular viewing head, Inclined at 45°	●	●
视度可调目镜 Diopter Adjustment	大视场平场目镜 EW10X/Φ23 Extra wide field eyepiece EW10X/Φ23	●	●
Eyepiece	WF15X/Φ16	○	○
	WF20X/Φ12	○	○
	WF30X/Φ9	○	○
变倍物镜 Zoom Objective	0.6X-5X	●	●
变倍比 Zoom Ratio	1: 8.3	●	●
工作距离 Working Distance	115mm	●	●
瞳距 Interpupillary Distance	55-75mm	●	●
辅助物镜 Auxiliary objective	0.5X WD: 220mm	○	○
	0.7X WD: 125mm	○	○
	2X WD: 45mm	○	○
载物台插入圆板 Stage Insert	直径 125mm 透明玻璃盘 Glass plate, Diameter 125mm	●	●
	直径 100mm 透明玻璃盘 Glass plate, Diameter 100mm	●	●
	直径 125mm 黑白板 Opal & black acrylic plate, Diameter 125mm	●	●
	直径 100mm 黑白板 Opal & black acrylic plate, Diameter 100mm	●	●
调焦行程 Focusing Range	105mm	●	●
光源 Illumination	反射光照明 100V-240V/LED Incident Illumination 100V-240V/LED	●	●
	透射光照明 100V-240V/LED Transmitted Illumination 100V-240V/LED	●	●
摄影附件 Photo Attachment		○	○

注：●为标准配置，○为选购配件 Note: ● Standard Outfit, ○ Optional

系统配置图 System Diagram



注：* 表示与NSZ-F1、NSZ-F4相连接时需取下连杆
Note: * Take away the connecting column of NSZ-F1 and NSZ-F4.

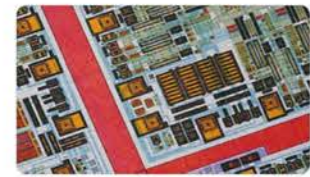
JSZ6 (NSZ-606)连续变倍体视显微镜 Zoom Stereo Microscope JSZ6 (NSZ-606)

性能

- 高性能光学部件，可形成清晰的高对比度图像，并确保大景深下图像的平场度。
- 符合人机工程学设计，可减轻长时间观察而产生的疲劳。
- 超薄型透反射式LED光源设计，照明均匀，平均寿命长达6000小时。
- 品种齐全的目镜和辅助物镜，丰富的附件可满足各项功能的扩展，特别适合工业组装和检验，以及教学和基础研究。

Features

- With high quality optical components, providing sharp and striking contrast image and ensure flat image at big depth of field.
- Ease the tiredness with ergonomic design.
- With LED light for both incident and transmitted illumination, Providing even illumination and life expectancy can reach 6000 hours.
- With Complete eyepieces, objectives and accessories, it is an ideal instrument for industry assembling, inspection and teaching field.

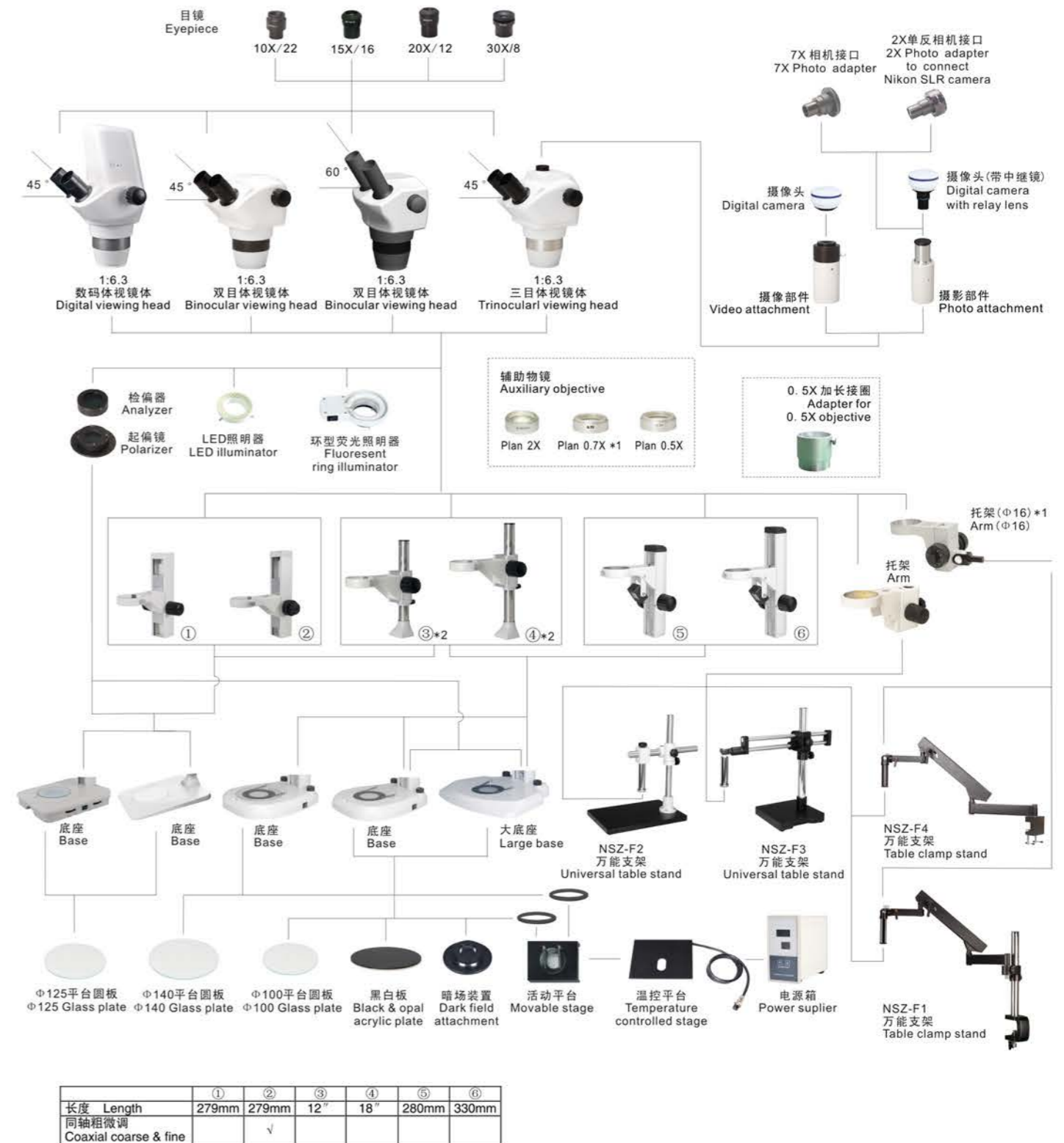


技术参数 Specification

		JSZ6
观察镜筒 Drawing Tube	双目体视镜体，倾角 45° Binocular viewing head, Inclined at 45°	●
	双目体视镜体，倾角 60° Binocular viewing head, Inclined at 60°	○
	三目体视镜体，倾角 45° Trinocular viewing head, Inclined at 45°	○
	数码体视镜体，倾角 45° Digital viewing head, Inclined at 45°	○
视度可调目镜 Diopter Adjustment Eyepiece	大视场平场目镜 EW10X/Φ22 Extra wide field eyepiece EW10X/22	●
	WF15X/Φ16	○
	WF20X/Φ12	○
	WF30X	○
变倍物镜 Zoom Objective	0.8X-5X	●
	变倍比 Zoom Ratio	6.3:1
工作距离 Working Distance	115mm	●
瞳距 Interpupillary Distance	55-75mm	●
辅助物镜 Auxiliary objective	0.5X WD: 220mm	○
	0.7X WD: 125mm	○
	2X WD: 45mm	○
载物台插入圆板 Glass Insert	直径 125mm 透明玻璃盘 Glass Insert, Diameter 125mm	●
光源 Illumination	反射光照明 100V-240V/LED Incident Illumination 100V-240V/LED	●
	透射光照明 100V-240V/LED Transmitted Illumination 100V-240V/LED	●
摄影附件 Photo Attachment		○
摄像附件 Video Attachment		○

注：●为标准配置，○为选购配件 Note: ● Standard Outfit, ○ Optional

系统配置图 System Diagram



注：*1 表示与NSZ-F1、NSZ-F4相连接时需取下连杆
*2 配置立柱时，不含电器。
Note: *1 Take away the connecting column of NSZ-F1 and NSZ-F4.
*2 Without illumination.

体视显微镜 Stereo Micro
宝石显微镜 Gem Micro
单筒连续变倍显微镜 Monocular Zoom Micro
金相显微镜 Metallurgical Micro
偏光显微镜 Polarizing Micro
便携式测量显微镜 Portable Measuring Micro
附件 Attachment

体视显微镜 Stereo Micro
宝石显微镜 Gem Micro
单筒连续变倍显微镜 Monocular Zoom Micro
金相显微镜 Metallurgical Micro
偏光显微镜 Polarizing Micro
便携式测量显微镜 Portable Measuring Micro
附件 Attachment

JSZ5B (NSZ-405) 实习用体视显微镜

Academic Stereoscopic Microscopes JSZ5B (NSZ-405)

性能

- 具有高性能、高品质的优点,同时又有很高的性价比
- 合理的人机学设计简化了调节和操作,清晰的图像质量,超宽的视觉效果,是您最佳的选择
- 连续变倍比 1: 4. 5, 大视场目镜, 视场为 $\Phi 20\text{mm}$
- 可广泛应用于: 学校教学在自然科学方面的培训和教育; 医疗机构的日常检查; 精密制造业的装配、测试、测量以及品质管控, 尤其是IT产业检测

Features

- High quality, high function and excellent cost performance
- Best choose with ergonomic design, sharp image display and wide viewing field
- Providing a wide viewing field of $\Phi 20\text{mm}$ with the zoom ratio of 1:4. 5
- Ideal instrument in academic, medical and industrial field



屈光度可调, 满足不同视力水平
Diopter adjustable



物镜变倍范围 0.7X~3X/ 1X~4.5,
变倍比 1:4.3/ 1:4.5
Zoom objective 0.7X~3X/ 1X~4.5X,
Zoom ratio 1:4.3/ 1:4.5



高清晰度、大视场以及长工作距离等
逼真再现物体的三维影像
High resolution, Wide viewing field,
Long working distance



双目观察倾斜45°
双瞳距调节范围55~75mm
Binocular head inclined at 45°
Interpupillary 55~75mm



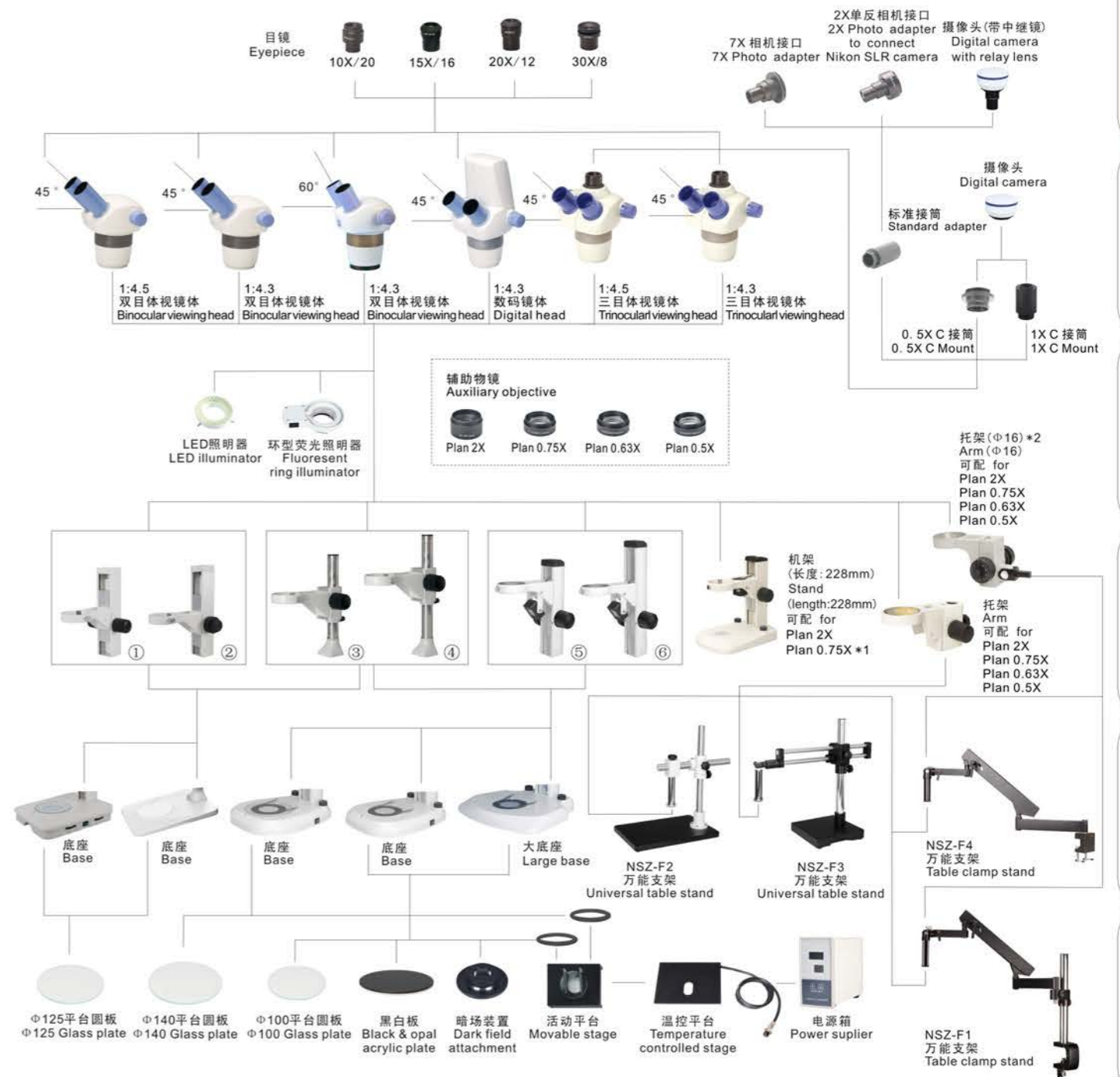
JSZ5B

技术参数 Specification

		JSZ5B	
镜体 Viewing Tube	双筒体视镜体, 倾角 45°	●	
	双筒体视镜体, 倾角 60°	○	
	三筒体视镜体, 倾角 45°	○	
	数码体视镜体, 倾角 45°	○	
视度可调目镜 Diopter Adjustment Eyepiece	EW10X/ $\Phi 20$	●	
	WF15X/ $\Phi 16$	○	
	WF20X/ $\Phi 12$	○	
	WF30X	○	
	EW10X 分划目镜	EW 10X Eyepiece with cross hair	○
物镜 Objective	变倍物镜	0.7X~3X	○
	Zoom objective	1X~4.5X	●
	辅助物镜	2X WD: 30mm	○
		0.75X WD: 120mm	○
		0.63X WD: 137mm	○
0.5X WD: 180mm		○	
连续变倍比 Zoom Ratio	1:4.3	○	
	1:4.5	●	
工作距离 Working Distance	97mm	●	
照明系统 Illumination	LED 反射光照明	LED Reflection illumination	●
	LED 透射光照明	LED Transmission illumination	●
摄影附件 Photo Attachment		○	
摄像附件 Video Attachment		○	

注: ●为标准配置, ○为选购配件 Note: ● Standard Outfit, ○ Optional

系统配置图 System Diagram



	①	②	③	④	⑤	⑥
长度 Length	279mm	279mm	12"	18"	280mm	330mm
同轴粗微调 Coaxial coarse & fine		√				

注: *1 表示该物镜在小机架上观察物体时要求物体高度不能超过30mm。
*2 表示与NSZ-F1、NSZ-F4相连接时需取下连杆。
Note: *1 The height of sample couldn't be over 30mm when viewed by the objective Plan 0.75X.
*2 Take away the connecting column of NSZ-F1 and NSZ-F4.

NTB系列连续变倍体视显微镜 Zoom Stereo Microscope NTB Series



技术参数 Specification

		NTB-5A	NTB-6A	NTB-2B	NTB-4B
镜体 Body	双筒体视镜体 Binocular viewing microscope body	●	●	●	●
	三筒体视镜体 Trinocular viewing microscope body	○	○	○	○
目镜 Eyepiece	WF5X			○	
	WF10X			●	●
	WF15X	○	○	○	○
	WF20X	○	○	○	○
	WF30X	○	○		
变倍物镜 Zoom Objective	EW10X	●	●		
	0.7X-4.5X				●
	0.8X-5X		●		
	1X-4X			●	
辅助物镜 Auxiliary Objective	1X-4.5X	●			
	0.5X	○	○	○	○
	0.63X	○			
	0.7X		○		
	0.75X	○		○	○
	1.5X			○	○
连续变倍比 Zoom Ratio	2X	○	○	○	○
	1: 4			●	
	1: 4.5	●			
	1: 6.3		●		
工作距离 Working Distance	1: 6.5				●
	82mm			●	
	97mm	●			
	100mm				●
透射光源 Transmitted Light	115mm		●		
	6V/20W 卤素灯 6V/20W Halogen Lamp	●	●		
	12V/10W 卤素灯 12V/10W Halogen Lamp			●	
反射光源 Incident Light	12V/15W 卤素灯 12V/15W Halogen Lamp				●
	6V/15W 卤素灯带反光碗 6V/15W Halogen lamp with reflector	●	●		
	12V/10W 卤素灯带反光碗 12V/10W Halogen lamp with reflector			●	
摄影附件 Photo Attachment	12V/15W 卤素灯带反光碗 12V/15W Halogen lamp with reflector				●
		○	○	○	○
摄像附件 Video Attachment		○	○	○	○

注：●为标准配置，○为选购配件 Note: ● Standard Outfit, ○ Optional

NS80系列变档体视显微镜 Stereo Microscope NS80 Series



NS80

性能

- 卓越的光学性能，是同档次显微镜中的优越者。
- 变档物镜1X/3X、1X/4X、1X/2X、2X/3X、2X/4X可供选择，丰富的目镜和辅助物镜扩展了倍率范围（5X-240X）。
- 最佳眼点高度，即使长时间使用眼睛也不会疲劳。
- 紧凑、轻巧的结构，可配套其他设备使用，工作距离长，通用性强，适用于多种检测。
- 可采用防静电设计。

Features

- The microscope is among the best in its class with excellent optical performance.
- Various objectives 1X/2X, 1X/4X, 1X/2X, 2X/3X, 2X/4X are available.
- Magnification range 5X-240 with optional eyepieces and auxiliary objectives.
- Comfortable operation with proper eyepoint.
- Compact structure, long working distance, suitable for various applications.
- ESD design is available.

技术参数 Specification

		NS80/13	NS80/14	NS80/12	NS80/23	NS80/24	
镜体 Viewing Tube	双筒体视镜体，倾角 45° Binocular head, inclined at 45°	●	●	●	●	●	
	双筒体视镜体，倾角 60° Binocular head, inclined at 60°	○	○	○	○	○	
	三筒体视镜体，倾角 45° Trinocular head, inclined at 45°	○	○	○	○	○	
视度可调目镜 Diopter Adjustment Eyepiece	WF10X/Φ23	●	●	●	●	●	
	WF10X/Φ20	○	○	○	○	○	
	WF10X/Φ22	○	○	○	○	○	
	WF15X/Φ16	○	○	○	○	○	
	高眼点 WF20X/Φ12 High-point WF20X/Φ12	○	○	○	○	○	
	低眼点 WF20X/Φ12 Low-point WF20X/Φ12	○	○	○	○	○	
物镜 Objective	WF30X/Φ8	○	○	○	○	○	
	WF10X 分划目镜 WF10X Eyepiece with cross hair	○	○	○	○	○	
	变档物镜 Objective	1X/3X	●				
		1X/4X		●			
		1X/2X			●		
2X/3X					●		
辅助物镜 Auxiliary objective	2X/4X					●	
	2X WD: 30mm	○	○	○	○	○	
	0.75X WD: 120mm	○	○	○	○	○	
	0.63X WD: 137mm	○	○	○	○	○	
工作距离 Working Distance	0.5X WD: 180mm	○	○	○	○	○	
	97mm	●	●	●	●	●	
体视架台 Stand	无光源架台 Stand without illumination	○	○	○	○	○	
	透射架台, LED 照明 Stand with LED transmission illumination	○	○	○	○	○	
	反射架台, LED 照明 Stand with LED reflecting illumination	○	○	○	○	○	
	透/反射架台, LED 照明 Stand with LED transmission & reflecting illumination	●	●	●	●	●	
接筒 Adapter	TV 接筒 TV Mount	○	○	○	○	○	
	0.5X C 接口 0.5X C Mount	○	○	○	○	○	
	1X C 接口 1X C Mount	○	○	○	○	○	

注：●为标准配置，○为选购配件 Note: ● Standard Outfit, ○ Optional



NTX-1A

NTX-2B



NTX-3C



NTX-5C



NTX-6C-W

型号 Model	照明光源 Illumination	观察头和镜体 Head and Body	物镜 Objective	工作距离 W.D.	目镜 Eyepiece
NTX-1A	无光源 No Light	直筒观察 Straight Viewing	2X 插入式 Inserted	80MM	WF10X/20
NTX-1B	落射光源 Incident Light				
NTX-1C	落射/透射光源 Incident/Transmitted Light				
NTX-2A	无光源 No Light	斜筒观察 镜体不可旋转 Inclined Viewing Un-rotatable Body	2X&4X 旋转式90° 90° Rotated	57MM	
NTX-2B	落射光源 Incident Light				
NTX-2C	落射/透射光源 Incident/Transmitted Light				
NTX-3A	无光源 No Light	斜筒观察 镜体360°可转 Inclined Viewing Body 360° rotatable	2X&4X 旋转式360° 360° Rotated	76MM	
NTX-3B	落射光源 Incident Light				
NTX-3C	落射/透射光源 Incident/Transmitted Light				
NTX-5A	无光源 No Light	斜筒观察 镜体360°可转 Inclined Viewing Body 360° rotatable	2X&4X 旋转式360° 360° Rotated	76MM	
NTX-5B	落射光源 Incident Light				
NTX-5C	落射/透射光源 Incident/Transmitted Light				
NTX-6C-W	落射/透射光源 Incident/Transmitted Light				

性能

- 双目瞳距: 55-75mm
- 单目视度调节: +/-5屈光度
- 照明: 110V或220V/ 12V10W, CE认证
- 可供附件: 插入式物镜1×, 3×, 4×, 6×
旋转式物镜1×&2×, 1×&3×
目镜 WF5×, WF15×, WF20×

Features

- Interpupillary distance: 55-75mm
- One tube with diopter adjustment: +/-5 Dio.
- Illumination: 110V or 220V/12V10W, CE approval
- Optional accessories:
Inserted objective 1X, 3X, 4X, 6X
Rotated Objective 1X&2X, 1X&3X
Eyepiece WF5X, WF15X, WF20X

NTX系列变倍体视显微镜
Microscope NTX Series



NTX-10



NTX-20



规格 Specifications		NTX-10	NTX-20
目镜 Eyepiece	WF10X / Φ 20	○	○
	WF5X, WF15X, WF20X	选购 Optional	
物镜/工作距离 Working Distance/Objective	2X & 4X/ 72mm	○	○
	1X & 2X/72mm , 1X & 3X/72mm	选购 Optional	
辅助物镜 Auxiliary Objective	0.5X, 0.75X, 1.5X, 2X	选购 Optional	
照明 Illumination	无光源 No Light	○	
	透射和落射照明, 卤素灯 Transmitted and Incident Light 110V or 220V/6V12W T-H Lamp		○

长工作距离体视显微镜
Long Working Distance Stereo Microscope



NTX-L

规格

- 长臂机架
- 斜筒双目观察, 双目调节范围55-75mm, 左目镜筒视度可调+/-5 屈光度
- 大视场目镜WF10×/Φ20
- 插入式物镜1×
- 物镜工作距离230mm
- 照明110V或220V/12V30W白炽灯

选购件:

物镜0.5×, 工作距离250mm
目镜WF5×/Φ22, WF15×/Φ15, WF20×/Φ10

Specification

- Long Arm for Microscope Body
- Inclined Binocular Head Interpupillary Distance 55-75mm
Diopter Adjustment on Left Tube +/-5 Dio.
- Eyepiece WF10X
- Inserted Objective 1X
- Working Distance of Objective 230mm
- Illumination 110V or 220V/ 12V10W Incandescent Lamp

Options:

Objective 0.5X, Working Distance 250mm
Eyepiece WF5X/Φ22, WF15X/Φ15, WF20X/Φ10



NGI系列宝石显微镜 Professional Gem Microscope NGI Series

性能

- 高亮度的暗场照明，可观察到高清晰和高分辨率的立体图像，是鉴定宝石等的专用显微镜
- 多功能、人性化的结构设计使操作者的工作效率大大提高，减轻操作者的疲劳感

Features

- Offering crisp sharp and high resolution image with bright dark ground illumination, it is a professional gemological stereo zoom microscope
- Designing in economic idea, it makes operators feel more comfortable



机架 Stand

NGI-6

技术参数 Specification

		NGI-6
变倍镜体 Stereo Zoom Body	变倍物镜 0.8X-5X, 变倍比 1: 6.3, 工作距离 115mm Zoom objective 0.8X-5X, Zoom ratio 1: 6.3, Working distance 115mm	●
目镜 Eyepiece	广角目镜 WF15X/Φ16, 视度可调 Extra wide field eyepiece WF15X/Φ16 with diopter adjustment	●
明、暗场照明 Bright & Dark Viewing Field Illumination	可变光栏 Φ2mm-41mm, 可对照明光束进行调节, 方便明、暗场照明的转换 Iris diaphragm 2mm-41mm Bright and dark viewing field illumination adjustable	●
照明 Illumination	9W 日光型荧光灯, 符合对钻石的照明要求 9W Fluorescent lamp	●
	LED 点光源 LED Point Light	●
	6V/20W 卤素灯, 可下拉式换灯泡 6V/20W Halogen illumination	●
调焦系统 Focusing	110mm 调焦行程, 可对大小不同的宝石及样品进行观察 Focusing range: 110mm; Suitable for observing different size gem and sample	●
钢丝宝石夹 Gem Clamp	刚性适中的钢丝宝石夹持牢靠、方便, 并能减少宝石腰部的光线遮挡, 可对宝石进行全方位地观察 Quality steel clamp to hold the gem for all direction observations of gems	●
工作台 Stage	两边都有宝石夹的安装孔, 操作者可以根据自己的习惯选择 Two gem clamp fixing holds for you to choose	●
弯臂 Stand	弯臂可作 0-38° 倾斜, 从而可以调节观察眼点的高度和角度, 使操作更加方便舒适 0-38° Rotatable, eyepoint height and angle adjustable	●
底座 Base	底座可作 0°-325° 旋转 0°-325° Rotatable	●

注: ● 为标准配置, ○ 为选购配件 Note: ● Standard Outfit, ○ Optional

XZ系列单筒连续变倍显微镜 Monocular Zoom Microscope XZ Series

性能

- 无限远高品质 1: 6.5 连续变倍光学系统
- 可配置高分辨率摄像机, USB2.0 输出
- 数字式摄像头与电脑直接相连, 实现显示、分析功能
- 更宽的视野, 目视观察可达 85mm
- 更高的放大倍率, 15寸显示器观察可达 400倍



XZ-2



NXZ-10



XZ-2B



XZ-3

Features

- Infinite and high quality zoom optical system 1:6.5
- High-resolution camera, USB2.0 output
- Digital camera connected to computer to achieve analysis function
- Wider viewing field (eye survey up to 85mm)
- Higher magnification (up to 400× with 15" monitor)

技术参数 Specification

		NXZ-10	XZ-2B	XZ-2	XZ-3	XZ-4
镜体 Body	目镜 WF10X Eyepiece WF10X	●	●	●	●	●
	连续变倍比 1: 6.5 Zoom Ratio: 1: 6.5	●	●	●	●	●
	总放大倍率 7X-45X Total Magnification 7X-45X	●	●	●	●	●
	工作距离 90mm Working Distance 90mm		●	●	●	●
	工作距离 93.7mm Working Distance 93.7mm	●				
机架 Stand	调焦范围 55mm Focusing Range 55mm			●	●	●
	工作台 Φ90mm 磨砂玻璃板或黑白白板, 带切片压片 Φ90mm Frosted Glass or Black/White Plate & Clips			●		
	工作台: 220X284mm Stage: 220X284mm				●	●
照明 Illumination	反射光源 Episcopic Illumination			●		
	透射光源 Diascopic Illumination			●		
	6V/15W 卤素灯带反光碗 6V/15W Halogen Lamp with Reflector			●		
	环型荧光照明 Annular Fluorescent Illuminator				●	
摄像系统 Video System	环型 LED 照明 Annular LED Illuminator					●
	冷光源照明 Cold Light Illuminator			○	○	○
附件 Accessory	C 型摄像接口 C Mount	●	●	●	●	●
	辅助物镜 Auxiliary Objective			○	○	○
	手推式移动平台 Mechanical Stage			○	○	○
	各种类型的体视机架 Various Stand			○	○	○
软件 Software	0.3X		○	○	○	○
	0.5X		○	○	○	○
	2X		○	○	○	○
软件 Software	ScopImage 9.0			○	○	○
	ScopImage Analysis			○	○	○
	ScopImage Advanced			○	○	○

注: ● 为标准配置, ○ 为选购配件 Note: ● Standard Outfit, ○ Optional

NMM-800D系列全自动聚焦金相显微镜 Metallurgical Microscope NMM-800D Series

性能

- NMM-800D 4.5轴全自动聚焦金相显微镜，整合了现代美学和不同边缘学科的优点，实现了实验室显微镜的自动化。
- 四轴电机驱动，可实现手动或自动调节物镜转换器/载物台X方向/Y方向和Z方向粗微动，采用先进的数字调光技术，将光源亮度分成100级(0-99)，实现电子控制显微镜光源亮度。
- 百万像素摄像系统，USB2.0接口即插即用，实时预览可达30帧/秒。
- 内置动态聚焦系统，无需计算机即可实现快速自动聚焦。
- 高精度丝杠平台精确定位，自动调焦迅速找到最清晰的图像，计算机控制自动切片扫描、识别。
- 通过网络远程控制系统，进行实时教学等。

Features

- NMM-800D Motorized Auto-Focus Microscope, integration the advantages of modern aesthetics and the edge of disciplines to achieve the automation of microscopes in laboratory.
- Four motor drive, objective nosepiece, stage and coarse & fine adjustment can be controled manually or motorized. Adoption of progressive technological Digital dimmer, which divided the brightness of halogen lamp into 100 step.
- Megapixels camera system, USB 2.0 plugs and play; real-time preview is up to 30 frames/ sec.
- Built-in dynamic focusing system, auto-focus without computer.
- High precision positioning leading screw stage, quickly receiving the clearest images by auto-focus. Auto slice scanning, recognizing are controlled by the computer.
- Network remote control system for real-time teaching etc.



高精度的丝杠平台，保证显微镜图像的精度。
High precision leading screw stage makes sure the quality of the images.



触摸式自动显微镜控制器，符合人机一体化操作。
The touchpad control box of N-800D motorized auto-focus microscope is in line with the man-machine integration.



内置动态聚焦系统，无需计算机即可实现快速自动聚焦。
Built-in dynamic focusing system, auto-focus without computer.

技术参数 Specification

		NMM-800DTRF	NMM-800DRF
光学系统 Optical System	无限远系统 Infinite optical system	●	●
聚焦观察头	铰链式三目头，30°倾斜，瞳距48-75mm	●	●
目镜 Eyepiece Tube	Seidentopf Type Trinocular Head Inclined at 30°, Interpupillary 48-75mm	●	●
视度可调目镜 Eyepiece	超大视野目镜 EW10X/22, 镜筒Φ30 配合 Extra Wide Field Eyepiece EW10X/22	●	●
摄像装置 Camera	类型: 300万像素摄像系统 3.0 Mega Pixels CMOS Chip	●	●
	分辨率: 2048X1536 像素 Resolution ratio: 2048X1536	●	●
	像素点尺寸: 3.2umX3.2um Pixel size: 3.2umX3.2um	●	●
	帧率 Maximum frame rate: 2048X1536 12 f/s	●	●
	1600X1200 20 f/s	●	●
	1280X1024 27 f/s	●	●
	1024X768 43 f/s	●	●
	灵敏度 Responsivity: 1.0V/lux-sec(550nm)	●	●
	曝光: 手动/自动曝光, 曝光时间可调	●	●
	Exposure: Manual or auto exposure, time adjustable	●	●
	信噪比 SNR: >43dB	●	●
转换器 Nosepiece	五孔电动转换器 Quintuple Nosepiece	●	●
物镜转接圈 Adapter	明场、暗场物镜转接圈 2个 2 BF/DF Adapter	●	●
无限远平场 Achromatic Objective	5X/0.12/∞/- (BF&DF) WD 12mm	●	●
	10X/0.25/∞/- (BF&DF) WD 10.0mm	●	●
	20X/0.4/∞/0 (BF&DF) WD 4.30mm	●	●
	50X/0.75/∞/0 (BF&DF) WD 0.32mm	●	●
	100X/0.8/∞/0 (BF&DF) WD 2mm	●	●
最大标本高度 Maximum Sample Height	40X/0.65/∞/0.17 WD 0.54mm	○	○
	100X/1.25/∞/0.17 WD 0.13mm	●	●
	40X/0.6/∞/0 (BF&DF) WD 2.90mm	○	○
反射照明 Incident Light	24V/100W 卤素灯, 亮度可调 24V/100W Halogen light, lightness adjustable	●	●
	柯勒照明系统, 非球面集光器 Kohler illumination and aspherical condenser	●	●
	起偏镜、检偏镜 Polarizer and analyzer	○	○
	起偏、检偏同步连接板 An integrate device foe polarizer and analyzer	○	○
透射照明 Transmitted Light	蓝、绿、黄滤色片和磨砂玻璃 Blue, Green, Yellow and Ground glass	●	●
	摆出式聚光镜 NA0.9/0.25 Swing-out condenser NA0.9/0.25	●	●
滤光片 Filter	24V/100W 卤素灯, 非球面集光器 Halogen light and aspherical condenser	●	●
	蓝色滤色片 Blue filter	●	●
调焦系统 Focusing	ND25、ND6	○	○
载物台 Stage	自动聚焦, 分辨率<1μm Auto focus resolution<1μm	●	●
	丝杠平台, 重复精度<1μm Leading screw stage precision<1μm	●	●
	切片托板 Specimen holder	●	●
	载物台板 Specimen preparation plate	●	●
硬件系统 Hardware	载物玻璃板 Slide glass	●	○
	USB2.0 电缆 USB2.0 cable	●	●
	软件加密狗 USB DOG	○	○
	0.01mm 测微尺 0.01mm Micrometer	○	○
	自动显微镜控制器 The control box of N-800D Motorized Auto-Focus Microscope	●	●
	9针控制信号线 9-PIN Control Port Line	●	●
	15针控制信号线 15-PIN Control Port Line	●	●
	25针控制信号线 25-PIN Control Port Line	●	●
	9针串口信号线 9-PIN Serial Port Line	●	●
	3.5mm 聚焦信号线 3.5mm auto focus signal cable	●	●
适配器 Adapter	●	●	
计算机 Computer	○	○	
全自动显微镜控制软件 Motorized Auto-Focus Microscope Control Software	●	●	
压平机 Specimen Presser	○	○	

注: ●为标准配置, ○为选购配件 Note: ● Standard Outfit, ○ Optional

NMM-800/820 系列金相显微镜 Metallurgical Microscope NMM-800/820 Series

性能

- 研究用系统金相显微镜，涵盖明场、暗场、偏光等观察方式。
- 反射、透反射两种照明系统可选，配有大功率透反射式双光路柯勒照明系统。
- 适用于工矿企业、高等院校及科研机构作材料内部组织结构分析。

Features

- Laboratory metallurgical microscope, including bright field, dark field and polarization observation system.
- Powerful transmitted and reflected system with Kohler illumination.
- Ideal instrument for industry inspection and science research.



NMM-800

NMM-820

技术参数 Specification

		NMM-800RF	NMM-800TRF	NMM-820RF	NMM-820TRF
光学系统 Optical System	无限远系统 Infinite optical system	●	●	●	●
目镜 Eyepiece	超大视野目镜 EW10X/22, 镜筒 Φ30 Extra wide field eyepiece EW10X/22	●	●	●	●
无穷远平场消色差物镜 Infinite Plan Achromatic Objective	5X/0.12/∞/-(BF) (明场)	●	●	●	●
	10X/0.25/∞/-(BF/DF) (明暗场共用)	●	●	●	●
	20X/0.4/∞/0(BF/DF) (明暗场共用)	●	●	●	●
	50X/0.75/∞/0(BF) (明场)	●	●	●	●
	100X/0.8/∞/0(BF) (明场)	●	●	●	●
	40X/0.65/∞/0.17	●	●	●	●
	100X/1.25/∞/0.17	●	●	●	●
	2.5X/0.08/∞/-(BF) (明场)	○	○	○	○
	2.5X/0.08/∞/-(BF) (明场)	○	○	○	○
	5X/0.12/∞/-(BF/DF) (明暗场共用)	○	○	○	○
40X/0.6/∞/0(BF/DF) (明暗场共用)	○	○	○	○	
50X/0.75/∞/0(BF/DF) (明暗场共用)	○	○	○	○	
100X/0.8/∞/0(BF/DF) (明暗场共用)	○	○	○	○	
微分干涉 DIC	20X, 100X			○	○
最大标本高度 Maximum Sample Height	30mm		●		●
观察头 Viewing Head	铰链式三目观察头, 30°倾斜, 瞳距 48-75mm Siedentopf trinocular viewing head, inclined at 30°, interpupillary 48mm-75mm	●	●	●	●
反射照明 Incident Light	24V/100W 卤素灯, 亮度可调 24V/100W Halogen light, lightness adjustable	●	●	●	●
	柯勒照明系统, 非球面集光器 Kohler illumination and aspherical condenser	●	●	●	●
	起偏镜、检偏镜 Polarizer and analyzer	○	○	○	○
	起偏、检偏同步连接板 An integrate device foe polarizer and analyzer	○	○	○	○
透射照明 Transmitted Light	蓝、绿、黄滤色片和磨砂玻璃 Blue, Green, Yellow and Ground glass	●	●	●	●
	摆出式聚光镜 NA0.9/0.25 Swing-out condenser NA0.9/0.25	●	●	●	●
	24V/100W 卤素灯, 非球面集光器 Halogen light and aspherical condenser	●	●	●	●
滤光片 Filter	蓝色滤色片 Blue filter	○	●	○	●
调焦系统 Focusing	ND25、ND6 粗微动同轴调焦, 微调格值 1μm, 粗动松紧调节, 带限位装置, 移动范围 30mm Coaxial coarse and fine adjustment, fine division 1μm, moving range 30mm	●	●	●	●
转换器 Nosepiece	内向式五孔转换器 Backward quintuple nosepiece	●	●	●	●
载物台 Stage	无孔矩形双层活动平台 186X138mm/74mmX50mm Non-porous double layer mechanical stage 186X138mm/74mmX50mm	●	●	●	●
	矩形双层活动平台 186X138mm/74mmX50mm Double layer mechanical stage 186X138mm/74mmX50mm		●		●
	矩形玻璃平台 Glass specimen preparation plate	○	○	○	○
	载物平板 Specimen preparation plate		●		●
压平机 Specimen Presser	载玻片 Slide glass		●		●
摄影附件 Photo Attachment		○	○	○	○
摄像附件 Video Attachment	标准 C 型接口 1X, 0.5X C Mount 1X, 0.5X	○	○	○	○

注: ●为标准配置, ○为选购配件 Note: ● Standard Outfit, ○ Optional

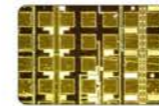
MV5000 金相显微镜 Metallurgical Microscope MV5000

性能

- 研究用系统金相显微镜，涵盖明场、暗场、偏光、微分干涉等观察方式。
- 反射、透反射两种照明系统可选，配有大功率透反射式双光路柯勒照明系统。
- 适用于工矿企业、高等院校及科研机构作材料内部组织结构分析。

Features

- Laboratory metallurgical microscope, including bright field, dark field, polarization and DIC observation system.
- Powerful transmitted and reflected system with Kohler illumination.
- Ideal instrument for industry inspection and science research.



暗场观察
Darkfield Observation System



偏光观察
Polarization Observation System



MV5000

技术参数 Specification

		MV5000 (R)	MV5000 (T/R)
光学系统 Optical System	无限远光学系统 Infinite optical system	●	●
超大视野目镜 Extra Wide Field Eyepiece	WF10X/20	●	●
	WF10X/20, 十字分划目镜 WF10X/20 Eyepiece with scale of cross hair	●	●
	WF15X/16	○	○
	WF20X/12	○	○
无穷远平场消色差物镜 Infinite Plan Achromatic Objective	5X/0.12/∞/-(BF/DF) LWD 10mm	●	●
	10X/0.25/∞/-(BF/DF) LWD 10mm	●	●
	20X/0.4/∞/0(BF/DF) LWD 5mm	●	●
	50X/0.75/∞/0(BF/DF) LWD 1.3mm	●	●
	100X/0.90(Dry)/∞/0(BF/DF) LWD 0.7mm	●	●
	40X/0.65/∞/0.17(BF) WD 0.6mm	●	●
	100X/1.25/∞/0.17(BF) WD 0.16mm	●	●
观察头 Viewing Head	铰链式双目观察头, 30°倾斜, 瞳距 48-75mm Siedentopf binocular viewing head, inclined at 30°	●	●
	铰链式三目观察头, 30°倾斜, 瞳距 48-75mm Siedentopf trinocular viewing head, inclined at 30°	○	○
柯勒照明 Kohler Incident Light	12V/50W 卤素灯, 预置中心、亮度连续可调 12V/50W Halogen light, Center and brightness adjustable	●	●
	12V/20W 卤素灯, 预置中心、亮度连续可调 12V/20W Halogen light, Center and brightness adjustable	●	●
	起偏镜、检偏镜 Polarizer and analyzer	●	●
调焦系统 Focusing	微分干涉 DIC	○	○
	绿、灰滤色片, 色温片和磨砂玻璃 Green, Gray filter and ground glass	●	●
转换器 Nosepiece	粗微动同轴调焦, 微调格值 2μm, 粗动松紧调节, 移动范围 30mm Coaxial coarse and fine adjustment, fine division 2μm, moving range 30mm	●	●
载物台 Stage	内向式五孔转换器 Backward quintuple nosepiece	●	●
	矩形双层活动平台 216X150mm, 移动范围 78mmX54mm Double layer mechanical stage 216X150mm, Moving range 78mmX54mm		●
	矩形三层活动平台 188X148mm, 移动范围 78mmX54mm	●	
	Double layer mechanical stage 188X148mm, Moving range 78mmX54mm		●
附件 Accessories	压平机 Specimen Presser	○	○
	摄影附件 Photo attachment	○	○
	物镜测微尺 0.01mm Micrometer scale 0.01mm	●	●

注: ●为标准配置, ○为选购配件 Note: ● Standard Outfit, ○ Optional

XJG-05 金相显微镜 Metallurgical Microscope XJG-05

性能

- 国内最大型的卧式金相光学显微镜。
- 广泛应用于研究金属的纤维组织，能在明场、暗场和偏光下进行观察、投影和摄影。
- 可供研究单位，冶金和机械制造工厂以及高等工业院校作金属学与热处理、金属物理学、炼钢与铸造过程等金相试验研究之用。

Features

- Biggest horizontal optical metallurgical microscope in china.
- Widely used in researching microstructure of metal. Viewing, projection, photography in bright field, dark field or polarization.
- Can be used in research unit, metallurgical factory and colleges of industry for metallurgical testing, like metallography and heat treatment, metal physics, process of steel making and casting.



XJG-05

技术参数 Specification

		XJG-05
目镜 Eyepiece	8X/18	●
	10X/16	●
	10X 十字分划目镜 Eyepiece with scale of cross hair 10X	●
	12.5X/14	●
	16X/12	●
平场消色差物镜 Plan Achromatic Objective	5X/0.12 WD 13.9mm	●
	10X/0.25 WD 7mm	●
	20X/0.40 WD 6.4mm	●
	50X/0.75 WD 1.8mm	●
	100X/0.9 WD 0.7mm	●
暗场套筒 Adapter for Dark Field	10X 物镜暗场套筒 Adapter for objective 10X 20X 物镜暗场套筒 Adapter for objective 20X	● ●
观察头 Viewing Head	平拉式双目观察头 Sliding binocular viewing head	●
柯勒照明 Kohler Incident Light	12V/50W 卤素灯，中心、亮度连续可调 12V/50W Halogen light, Center and brightness adjustable 起偏镜、检偏镜 Polarizer and analyzer	● ●
载物台 Stage	圆形机械平台直径 Φ160mm，360°旋转，中心可调，移动范围 12mmX16mm Circle-mechanical stage Φ160mm, Center adjustable moving range 12X16mm 小平台：Φ10, Φ13, Φ15, Φ20, Φ21, Φ27 Stage: Φ10, Φ13, Φ15, Φ20, Φ21, Φ27	● ●
附件 Accessories	摄影附件 Photo/Video attachment 物镜测微尺 0.01mm Micrometer scale 0.01mm	○ ●
液晶数码屏 LCD Screen	10" TFT 触摸式液晶显示屏 10 Inch TFT touching screen	○

注：●为标准配置，○为选购配件 Note: ● Standard Outfit, ○ Optional

XJL-03金相显微镜 Metallurgical Microscope XJL-03

性能

- 体积小，重量轻，使用方便，附件多。
- 使用性能广泛，可以进行明视场观察、暗视场观察和偏光观察。
- 可供中小型工厂的现场金相分析和金相研究与摄像、摄影、图像分析之用。

Features

- Small cubage, light weight, easy operation and wide range of accessories.
- With bright field, dark field and polarization observation system.
- Widely used for field metallurgical analysis and research in factories. Also used for image and video analysis.



XJL-03A

技术参数 Specification

		XJL-03	XJL-03A
目镜 Eyepiece	10X/16	●	●
	10X 十字分划目镜 Eyepiece with scale of cross hair 10X	●	●
	12.5X/14	○	○
	16X/12	○	○
	平场消色差物镜 Plan Achromatic Objective	4X/0.10 WD 20.7mm 5X/0.12 WD 13.9mm 10X/0.25 WD 7mm 20X/0.40 WD 6.4mm 40X/0.65 WD 0.8mm 50X/0.75 WD 1.8mm 100X/0.9 WD 0.7mm	○ ● ● ● ○ ● ○
变倍系统 Zooming system	1X、1.25X、1.6X	●	●
暗场套筒 Adapter for Dark Field	10X 物镜暗场套筒 Adapter for objective 10X 20X 物镜暗场套筒 Adapter for objective 20X	● ●	● ●
观察头 Viewing Head	平拉式双目观察头 Sliding binocular viewing head	●	●
数码屏 LCD Screen	8.4" TFT 触摸式液晶显示屏 8.4 Inch TFT Touching screen		●
输出 Output	USB2.0、AV 输出、VGA 输出、100M 以太网接口 USB2.0、AV and VGA Output, 100M Ethernet interface		●
支持系统 System	Windows CE 5.0		●
软件 Software	NMS (显微镜端软件) NMS Client (计算机端软件)		●
柯勒照明 Kohler Incident Light	12V/50W 卤素灯，中心、亮度连续可调 12V/50W Halogen light, Center and brightness adjustable 起偏镜、检偏镜 Polarizer and analyzer	● ● ●	● ● ●
载物台 Stage	圆形机械平台直径 Φ160mm，360°旋转，中心可调，移动范围 12mmX16mm Circle-mechanical stage Φ160mm, Center adjustable, moving range 12mmX16mm 小平台：Φ10, Φ13, Φ15, Φ20, Φ21, Φ27 Stage: Φ10, Φ13, Φ15, Φ20, Φ21, Φ27	● ● ●	● ● ●
附件 Accessories	摄影附件 Photo/Video attachment 物镜测微尺 0.01mm Micrometer scale 0.01mm	○ ●	○ ●

注：●为标准配置，○为选购配件 Note: ● Standard Outfit, ○ Optional

METAM LV 金相显微镜 Metallurgical Microscope METAM LV

性能

- 材料显微专家追求高端性能光学工具的最佳选择，在材料研发，质量控制和失效分析领域，从微观结构分析到微粒测量操作，及其他高挑战性的应用，江南倒置金相显微镜都为您呈现最优的光学性能。

Features

- Best choice for material microscopy expert who requires high-performance optical tool. It also supplies the best optical performance for material research, quality control, Invalidation Analysis and other applications.



METAM LV

技术参数 Specification

		METAM LV
光学系统 Optical System	无限远光学系统 Infinite optical system	●
超大视野目镜 Extral Wide Field Eyepiece	WF10X/20	●
	WF10X/20, 十字分划目镜 WF10X/20 Eyepiece with scale of cross hair	●
	WF15X/16	○
	WF20X/12	○
无穷远平场复消色差物镜 Infinite Plan APO Objective	5X/0.17/∞/0 (BF/DF) WD 8.6mm	●
	10X/0.28/∞/0 (BF/DF) WD 3.4mm	●
	20X/0.5/∞/0(BF/DF) WD 1.1mm	●
	50X/0.85/∞/0(BF/DF) WD 0.5mm	●
	100X/0.95(Dry)/∞/0(BF) WD 0.1mm	●
	100X/1.32(Oil)/∞/0(BF) WD 0.1mm	○
观察头 Viewing Head	铰链式三目观察头, 30°倾斜 Siedentopf trinocular viewing head, inclined at 30°	●
柯勒照明 Kohler Incident Light	12V/100W 卤素灯, 中心、亮度连续可调 12V/100W Halogen light, Center and brightness adjustable	●
	起偏镜、检偏镜 Polarizer and analyzer	●
	微分干涉 DIC	○
	绿、蓝、黄、灰滤色片和磨砂玻璃 Green, Blue, Yellow, Gray and ground glass	●
调焦系统 Focusing	粗微动同轴调焦, 微调格值 2μm, 粗动松紧调节, 移动范围向上 1mm, 向下 12mm Coaxial coarse and fine adjustment, fine division 2μm	●
转换器 Nosepiece	五孔转换器 Quintuple nosepiece	●
载物台 Stage	矩形双层活动平台 200X190mm, 移动范围 40mmX40mm	●
	Double layer mechanical stage 200X190mm, Moving range 40mmX40mm	●
	小平台: Φ16, Φ40, 水滴形 Stage: Φ16, Φ40, Teardrop	●
附件 Accessories	摄影、摄像附件 Photo/ Video attachment	○
	物镜测微尺 0.01mm Micrometer scale 0.01mm	●

注: ●为标准配置, ○为选购配件 Note: ● Standard Outfit, ○ Optional

MR5000 金相显微镜 Metallurgical Microscope MR5000

性能

- 高性能光学系统, 简便的操作, 创新的技术, 完善的功能, 良好的稳定性, 能满足您现在及将来的各种应用需求, 能够实现灵活升级, 比如可以轻松实现DIC观察

Features

- Meets all your requirement by High performance optical system, technological innovation, high stability. It also can be easily upgraded, for example DIC Viewing.



MR5000

技术参数 Specification

		MR5000
光学系统 Optical System	无限远系统 Infinite optical system	●
超大视野目镜 Extra Wide Field Eyepiece	WF10X/22	●
	WF10X/20, 十字分划目镜 WF10X/20 Eyepiece with Scale of Cross hair	●
	WF15X/16	○
	WF20X/12	○
无穷远长工作距离 平场消色差物镜 Infinite LWD Plan Achromatic Objective	5X/0.12/∞/0(BF/DF) LWD 10mm	●
	10X/0.25/∞/0(BF/DF) LWD 10mm	●
	20X/0.4/∞/0(BF/DF) LWD 5mm	●
	50X/0.75/∞/0(BF/DF) LWD 1.3mm	●
	100X/0.9/∞/0(BF/DF) LWD 0.7mm	●
	观察头 Viewing Head	铰链式双目观察头, 30°倾斜, 瞳距 48-75mm Siedentopf binocular viewing head, Inclined at 30°, Interpupillary 48mm-75mm
柯勒照明 Kohler Incident Light	12V/50W 卤素灯, 预置中心、亮度连续可调 12V/50W Halogen light, Center and brightness adjustable	●
	起偏镜、检偏镜 Polarizer and analyzer	●
	微分干涉 DIC	○
	内置式绿、蓝、黄、灰滤色片和磨砂玻璃 built-in Green, Blue, Yellow, Gray and ground glass	●
调焦系统 Focusing	粗微动同轴调焦, 微调格值 2μm, 粗动松紧调节, 移动范围向上 1mm, 向下 7mm Coaxial coarse and fine adjustment, fine division 2μm,	●
转换器 Nosepiece	内向式五孔转换器 Backward quintuple nosepiece	●
载物台 Stage	矩形双层活动平台 226X178mm, 移动范围 40mmX40mm	●
	Double layer mechanical stage 226X178mm, Moving range 40mmX40mm	●
	小平台: Φ20, Φ30, 水滴形 Stage Φ20, Φ30, Teardrop	●
附件 Accessories	摄影附件 Photo/Video attachment	○
	物镜测微尺 0.01mm Micrometer scale 0.01mm	●

注: ●为标准配置, ○为选购配件 Note: ● Standard Outfit, ○ Optional

NIM-100 倒置金相显微镜 Inverted Metallurgical Microscope NIM-100

性能

- 无限远光学系统，提供了卓越的光学性能。
- 可供观察和鉴别各种金属和合金的组织结构，其舒适稳重的镜体机构、高效方便的载物台设计、轻松快捷的操作方式，适合学校、工矿企业实验室长时间的轻松操作。

Features

- Infinitive optical system providing excellent optical functions.
- With the stable stand structure, advanced stage design and comfortable operation, it is widely used in institute and laboratory to observe and identify the structure of various metal and alloy.



NIM-100

技术参数 Specification

		NIM-100
观察头 Viewing Head	三目观察头，30°倾斜，瞳距 48-75mm Trinocular head inclined at 30°, Interpupillary 48-75mm	●
目镜 Eyepiece	高眼点、超大视野目镜 EW10X/20 High-point, Extra wide field eyepiece EW10X/20	●
无限远平场物镜 Infinite Plan Achromatic Objective	2.5X/0.08/∞/- WD 11.7mm	○
	2.5X/0.08/∞/- WD 10.7mm (λ 玻片)	○
	4X/0.1/∞/- WD 17.3mm	●
	5X/0.12/∞/- WD 15.4mm	○
	10X/0.25/∞/- WD 10mm	●
	20X/0.4/∞/0 WD 5.8mm	●
	40X/0.65/∞/0 WD 0.52mm	●
	40X/0.6/∞/0 WD 2.90mm	○
	50X/0.75/∞/0 WD 0.32mm	○
80X/0.90/∞/0 WD 0.20mm	○	
100X/0.80/∞/0 WD 2mm	○	
转换器 Nosepiece	五孔转换器 Quintuple nosepiece	●
载物台 Stage	平面载物台带压片 Plain stage with slide clips	●
	机械移动尺，右手低位同轴 X、Y 方向旋钮，移动范围 120X78mm Attachable mechanical stage, X-Y Coaxial control, Moving rang 120X78mm	○
	矩形双层活动平台 226X178mm，移动范围 50X50mm * Double layer mechanical stage 226X178mm, Moving rang 50X50mm	○
	接长托板 Auxiliary stage	○
调焦系统 Focusing	同轴粗微调焦机构，通过转换器的上下移动进行调焦，粗调行程每圈 37.7mm，微调行程每圈 0.2mm Coaxial coarse & fine adjustment, Vertical objective movement, Coarse stroke.37.7mm per rotation, Fine stroke 0.2mm per rotation	●
照明 Illumination	6V/ 30W 卤素灯，柯拉照明 Halogen lamp 6V/ 30W ,Kohler illumination	●
滤色镜 Filter	蓝色、黄色、绿色、磨砂玻璃片 Blue, Yellow, Green and ground glass	●
偏光装置 Polarization Attachment		●
摄影附件 Photo Attachment		○
摄像接口 Video Adapter	标准 C 接口 Video adapter with C mount	○

注：●为标准配置，○为选购配件
* 建议用长距离物镜
Note: ● Standard Outfit, ○ Optional
Long Working Distance Objective is Available

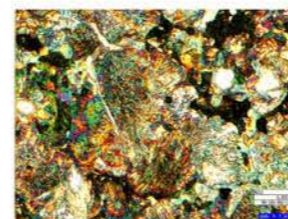
MR2000 金相显微镜 Metallurgical Microscope MR2000

性能

- 教学、实验、常规检测用倒置金相显微镜。
- 操作简单易用，同样具有出色的成像质量。

Features

- Perfect for education, experiment, normal testing.
- Easy operation, also supplies high quality image.



MR2000

技术参数 Specification

		MR2000
观察头 Viewing Head	平拉式双目观察头 Sliding binocular viewing head	●
	单目观察头 Monocular viewing head	○
	内置数码平移式双目观察头 Integrative sliding binocular digital head	○
目镜 Eyepiece	WF10X/18	●
	WF12.5X/14	●
	WF16X/11	○
物镜 Objective	消色差物镜 10X, 100X Achromatic objective 10X, 100X	●
	平场消色差物镜 40X Plan achromatic objective 40X	●
	长工作距离平场消色差物镜 50X LWD Plan achromatic objective 50X	○
转换器 Nosepiece	三孔转换器 Triple nosepiece	●
调焦系统 Focusing System	同轴粗微调焦机构，微调格值 0.002mm，调焦范围 30mm Coaxial coarse and fine adjustment, Fine division 0.002mm, Moving range 30mm	●
载物台 Stage	机械平台 180X155mm，移动范围 40X30mm Mechanical stage 180X155mm, Moving range 40X30mm	●
科勒照明 Kohler Illumination	12V/20W 卤素灯，亮度连续可调	●
滤色片 Filter	12V/20W Halogen lamp, Brightness adjustable	●
	绿色、蓝色、黄色、毛玻璃	●
	Blue, Green, Yellow and ground glass	●

注：●为标准配置，○为选购配件
Note: ● Standard Outfit, ○ Optional

体视显微镜
Stere Micro

宝石显微镜
Gem Micro

单筒连续变倍显微镜
Monocular Zoom Micro

金相显微镜
Metallurgical Micro

偏光显微镜
Polarizing Micro

便携式测量显微镜
Portable Measuring Micro

附件
Attachment

体视显微镜
Stere Micro

宝石显微镜
Gem Micro

单筒连续变倍显微镜
Monocular Zoom Micro

金相显微镜
Metallurgical Micro

偏光显微镜
Polarizing Micro

便携式测量显微镜
Portable Measuring Micro

附件
Attachment

NJC-160系列工业检测显微镜 Metallurgical Microscope for Industrial Inspection NJC-160 Series

性能

- 超大移动范围的载物台设计，移动范围：10英寸(250mm)X10英寸(250mm)。
- 可供IT行业大面积集成电路、晶片的观察和检测，镜体机构舒适稳重、操作方式轻松快捷。
- 无限远光学系统，长工作距离高倍物镜（40X物镜工作距离2.9mm），提供了卓越的光学性能。
- 快速手推功能，可实现大距离快速到位。
- 粗微调低位前置操作，适合长时间轻松工作不疲劳。

Features

- Big Stage with Extra Large Moving Range 250X250mm.
- It is widely used in IT Industry for Large Area Integrate Circuit, Wafer Observation and Inspection.
- Excellent Optical Quality with Infinite Optical System and LWD High Magnification Objective(40X/WD2.9mm).
- Stage Speedy Movement by Hand to Get Observation Point Immediately.
- Comfortable and Enjoyable Operation with Low and Pre Position Control Knob.



配备偏光装置，适用不同标本观察
Suitable for different specimen observation with polarization attachment



超大移动范围载物台，快速手推和精细调节均可使用
Big stage with extra large moving range. Both speedy movement by hand and precise adjustment are available



NJC-160A

技术参数 Specification

		NJC-160A	NJC-160B
观察头 Viewing Head	铰链式三目镜筒 Seidentopf type trinocular head	●	●
目镜 Eyepiece	超大视野目镜 EW10X/22 Extra wide field eyepiece EW10X/22	●	●
物镜 Objective	无限远平场消色差物镜 Infinitive Plan Achromatic Objectives		
	2.5X/0.08/∞/- WD 11.7mm	○	○
	2.5X/0.08/∞/- WD 10.7mm (λ玻片)	○	○
	4X/0.10/∞/- WD 17.8mm	●	●
	5X/0.12/∞/- WD 15.5mm	○	●
	10X/0.25/∞/- WD 10.0mm	●	●
	10X/0.25/∞/- (BF/DF) WD 10.0mm	○	●
	20X/0.40/∞/0 WD 5.8mm	●	●
	20X/0.40/∞/0 (BF/DF) WD 4.30mm	○	●
	40X/0.60/∞/0 WD 2.90mm	●	●
50X/0.75/∞/0 WD 0.32mm	○	●	
100X/0.80/∞/0 WD 2.00mm	○	●	
转换器 Nosepiece	五孔转换器 Quintuple Nosepiece	●	●
载物台 Stage	载物台面积 300mmX268mm, 移动范围 250mmX250mm Size 300mmX268mm, Movement range 250mmX250mm	●	●
焦距调节 Focusing	同轴粗微调焦机构, 行程 24mm Coaxial fine and coarse adjustment, Range 24mm	●	●
照明系统 Illumination	6V/20W 卤素灯, 亮度可调 220V or 110V/6V20W Halogen lamp, Brightness adjustable	●	●
	24V/100W 卤素灯, 亮度可调 24V/100W Halogen Lamp, Brightness adjustable	○	●
偏光装置 Polarization Attachment	检偏和起偏装置 Analyzer and Polarizer	○	○
滤色镜 Filter	蓝色、黄色、绿色、磨砂玻璃片 Blue, Green, Yellow, Ground glass	●	●
摄影附件 Photo Attachment		○	○
摄像接口 Video Adapter	标准 C 接口 C Mount	○	○
摄像系统 Camera System		○	○
应用软件 Software	图像处理软件 Image processing software	○	○

注：●为标准配置，○为选购配件 Note: ● Standard Outfit, ○ Optional

NJF-120A金相显微镜 Metallurgical Microscope NJF-120A

性能

- 无限远平场光学系统，长工作距离物镜，提供卓越的光学性能。
- 超低位前置粗微动操作，减轻使用者疲劳，使人机关系更密切。
- 插拔式灯泡换取装置，更换灯泡更加简捷、安全、可靠。
- 可供观察和检测各种PCB线路板、LCD液晶显示板、金属金相组织，其舒适精致的镜体机构、轻松快捷的操作方式，是工矿企业工业光学检测仪器及学校金相教学用仪器的首选。

Features

- Excellent infinite Optical System.
- High Magnification Objective with Long Working Distance.
- Comfortable and Enjoyable Operation with low and Repetitive Position Control knob.
- Easy, Safe and Reliable Lamp Replacement Device.
- The Microscope is widely used for PCB board, LCD display and metal structure observation and inspection.
- With Ingenious stand and convenient operation, it will be your best choice.



NJF-120A

技术参数 Specification

		NJF-120A	NJL-120A	
观察头 Viewing Head	铰链式双目观察头 Seidentopf type binocular head	●	●	
	铰链式三目观察头 Seidentopf type trinocular head	○	○	
目镜 Eyepiece	WF10X/18	●	●	
	WF8X/18	○	○	
	WF10X/18, 带 0.1mm 刻尺及十字分划	○	○	
	WF10X/18 with 0.1mm Micrometer & cross hair	○	○	
	WF12.5X/15	○	○	
物镜 Objective	无限远平场消色差物镜 Infinitive Plan Achromatic Objectives	2.5X/0.08/∞/- WD 11.7mm	○	○
		2.5X/0.08/∞/- WD 10.7mm (λ玻片)	○	○
		4X/0.1/∞/- WD17.3mm	●	●
		5X/0.12/∞/- WD15.5mm	○	○
		10X/0.25/∞/- WD10.0mm	●	●
		20X/0.40/∞/0 WD5.8mm	○	○
		40X/0.60/∞/0 WD2.90mm	●	●
		40X/0.65/∞/0 WD0.52mm	○	○
		50X/0.75/∞/0 WD0.32mm	○	○
		80X/0.90/∞/0 WD0.2mm	○	○
100X/0.80/∞/0 WD2mm	○	○		
转换器 Nosepiece	四孔转换器 Quadruple nosepiece	●	●	
载物台 Stage	双层活动平台, 尺寸 150X140mm, 移动范围 75X50mm Double layer mechanical stage150X140mm/75X50mm	●	●	
调焦系统 Focusing	同轴粗微调焦机构 Coaxial fine & coarse adjustment	●	●	
照明 Illumination	柯勒照明, 垂直照明系统带孔径可变光阑和视场可变光阑; 反射光照明, 6V/20W 卤素灯, 亮度可调 Kohler Illumination, Epi-illuminator with iris aperture diaphragm and iris field diaphragm, 6V/20W Halogen lamp, Brightness adjustable	●	●	
	透射光照明, 6V/20W 卤素灯, 亮度可调 Diascopic Illumination, 6V/20W Halogen lamp, Brightness adjustable	○	●	
滤色片 Filters	蓝色、绿色、黄色、磨砂玻璃片 Blue, Green, Yellow & ground Glass	●	●	
偏光装置 Polarization Set		○	○	
压机 Specimen Presser	金相试样的专用制作器械 For metallurgical specimen preparation	○	○	

注：●为标准配置，○为选购配件 Note: ● Standard Outfit, ○ Optional

NP-800RF/TRF 系列偏光显微镜 Polarizing Microscope NP-800RF/TRF Series

性能 Features



带有0-90度可旋转的检偏器。锥光观察装置可在正像镜检与锥光镜检之间快速切换，干涉图像调节精确、快速，图像清晰。

Rotatable analyzer with graduation 0°-90°. Quickly switch between orthoscopic and conoscopic observation. Precisely and quickly interference images adjustment.



可调中心的五孔物镜转换器。

Center adjustable quintuple nosepiece.



高精度圆形旋转载物台，台面大、旋转方便。装有复式机械移动尺，能够控制样品的细微移动。

High-precision revolving round stage, Attachable mechanical stage. Make the sample move finely.



技术参数 Specification

NP-800RF/TRF

		NP-800RF	NP-800TRF
光学系统 Optical System	无限远光学系统 Infinite optical system	●	●
观察系统 Viewing Head	铰链式三目镜筒，30°倾斜，瞳距 48-75mm Seidentopf trinocular head inclined at 30°, Interpupillary 48-75mm	●	●
目镜 Eyepiece	EW10X/22 平场目镜 Plan eyepiece EW10X/22 十字分划平场目镜、十字平场目镜、网格平场目镜 Plan eyepiece with scale of crosshair, Plan eyepiece with cross, Plan eyepiece with gridding	●	●
无应力平场消色差物镜 Strain-Free Plan Achromatic Objective	5X/0.12/∞/- WD 15.5mm	●	●
	10X/0.25/∞/- WD 10.0mm	●	●
	20X/0.4/∞/0 WD 5.8mm	●	●
	50X/0.75/∞/0 WD 0.32mm	●	●
	100X/0.8/∞/0 WD 2mm	●	●
转换器 Nosepiece	40X/0.65/∞/0.17 WD 0.54mm	●	●
	100X/1.25/∞/0.17 WD 0.13mm	●	●
转换器 Nosepiece	内向式五孔转换器，中心可调 Backward quintuple nosepiece, Center adjustable	●	●
检偏装置 Analyzer	0°-360°转动式检偏器，最小刻度 0.1° 360° dial rotation Minimum scale reading: 0.1° (Vernier scale)	●	●
锥光观察装置 Conoscopic observation attachment	正像镜检与锥光镜检可切换，可调焦 Switch between orthoscopic and conoscopic observation, Bertrand lens position adjustable	●	●
光程补偿器 Optical Compensator	λ 试板（一级红），1/4λ 试板，石英楔子试板 First-order red plate, Quarter-wave plate, Quartz wedge	●	●
圆型旋转载物台 Polarizing Rotatable Stage	直径 Φ170mm，中心可调，360°刻度，刻度格值 1°，游标格值 6'，45°定位旋转 Diameter Φ170mm, Center adjustable, 360° scale, Minimum division 1°, Minimum reading 6' by means of vernier scale, 45° Click stop knob	●	●
移动尺 Attachable Stage	移动范围 30mmX40mm Moving range 30mmX40mm	○	○
聚光镜 Condenser	NA0.9/0.25 无应力摆出式聚光镜 Strain-free swing condenser NA0.9/0.25 同轴粗微调焦机构，调焦范围 32mm，微调格值 0.001mm，粗动行程每圈 37.7mm，微动行程每圈 0.1mm	●	●
调焦系统 Focusing	Coaxial coarse & fine adjustment, Range 32mm, Fine division 0.001mm, Coarse stroke 37.7mm per rotation, Fine stroke 0.1mm per rotation	●	●
起偏装置 Polarizer	透射：360°旋转，0°位置可调整 Transmitted: 360° Rotatable 0° position adjustable 反射：固定式 Reflected: Fixed	●	●
照明系统 Illumination	24V/100W 卤素灯，亮度可调节 24V/100W Halogen lamp, Brightness adjustable	●	●
	反射照明 24V/100W 卤素灯，亮度可调节 Reflected light: 24V/100W Halogen lamp, Brightness adjustable 透射照明 24V/100W 卤素灯，亮度可调节 Transmitted light: 24V/100W Halogen lamp, Brightness adjustable	●	●
滤色片 Filter	Φ45mm 蓝色滤色片 Blue filter Φ45mm	●	●
	Φ45mm ND6 中性滤色片 ND6 Neutral density filter Φ45mm	○	○
	Φ45mm ND25 中性滤色片 ND25 Neutral density 25 filter Φ45mm	○	○
	Φ25mm 蓝色滤色片 Blue filter Φ25mm	○	○
	Φ25mm ND6 中性滤色片 ND6 Neutral density filter Φ25mm	○	○
附件 Attachment	Φ25mm ND25 中性滤色片 ND25 Neutral density filter Φ25mm 摄像附件 Video attachment 0.01mm 测微尺 0.01mm Micrometer	○	○

注：●为标准配置，○为选购配件 Note: ● Standard Outfit, ○ Optional

NP-800M 偏光显微镜 Polarizing Microscope NP-800M

性能

- 专用消应力物镜提供高清晰，高反差的图像。
- 用于单偏光，正像镜检，锥光镜检等多种观察。
- 透射，反射，透反射3种主要照明方式，24V/100W长寿命卤素灯光源使用。
- 平台可45°定位，并可装偏光专用大范围移动尺，各倍率物镜转换时无干涉现象，大幅提高工作效率。
- 专业偏光显微镜用于地质，石油，化工，高分子，液晶等领域。

Features

- Supply high quality and contrast image with special strain free objective.
- Single polarization, othogonal polarization and conoscopic observationon.
- Transmitted light and reflect light, 24V/100W long life halogen lamp.
- Stage with 45° located, attachable mechanical stage with large moving range, high efficiency by no interference when turning objectives.
- Professional polarizing microscope for geology, petroleum, chemicals, polymer, LED field.



NP-800M

技术参数 Specification

		NP-800M
光学系统 Optical System	无限远光学系统 Infinite optical system	●
观察系统 Viewing Head	铰链式三目镜筒，30°倾斜，瞳距 48-75mm Seidentopf trinocular head inclined at 30°, Interpupillary 48-75mm	●
目镜 Eyepiece	EW10X/22 平场目镜 Plan eyepiece EW10X/22 十字分划平场目镜、十字平场目镜、网格平场目镜 Plan eyepiece with scale of crosshair, Plan eyepiece with cross, Plan eyepiece with gridding	●
无应力平场消色差物镜 Strain-Free Plan Achromatic Objective	4X/0.10/∞/- WD 17.3mm	●
	10X/0.25/∞/0.17 WD 10.0mm	●
	20X/0.40/∞/0.17 WD 5.10mm	○
	40X/0.65/∞/0.17 WD 0.54mm	●
100X/1.25/∞/0.17 WD 0.13mm	●	
转换器 Nosepiece	内向式五孔转换器，中心可调 Backward quintuple nosepiece, Center adjustable	●
检偏装置 Analyzer	0°-360°转动式检偏器，最小刻度 0.1° 360° dial rotation Minimum scale reading: 0.1° (Vernier scale)	●
锥光观察装置 Conoscopic observation	正像镜检与锥光镜检可切换，可调焦 Switch between orthoscopic and conoscopic observation, Bertrand lens position adjustable	●
光程补偿器 Optical Compensator	λ 试板（一级红），1/4λ 试板，石英楔子试板 First-order red plate, Quarter-wave plate, Quartz wedge	●
圆型旋转载物台 Polarizing Rotatable Stage	直径 Φ170mm，中心可调，360°刻度，刻度格值 1°，游标格值 6'，45°定位旋转 Diameter Φ170mm, Center adjustable, 360° scale, Minimum division 1°, Minimum reading 6' by means of vernier scale, 45° Click stop knob	●
移动尺 Attachable Stage	移动范围 30mmX40mm Moving range 30mmX40mm	○
聚光镜 Condenser	NA0.9/0.25 无应力摆出式聚光镜 Strain-free swing condenser NA0.9/0.25 同轴粗微调焦机构，调焦范围 32mm，微调格值 0.001mm，粗动行程每圈 37.7mm，微动行程每圈 0.1mm	●
调焦系统 Focusing	Coaxial coarse & fine adjustment, Range 32mm, Fine division 0.001mm, Coarse stroke 37.7mm per rotation, Fine stroke 0.1mm per rotation	●
起偏装置 Polarizer	360°旋转，0°位置可调整 360°rotatable 0°position adjustable	●
照明系统 Illumination	24V/100W 卤素灯，亮度可调节 24V/100W Halogen lamp, Brightness adjustable	●
滤色片 Filter	Φ45mm 蓝色滤色片 Blue filter Φ45mm	●
	Φ45mm ND6 中性滤色片 ND6 Neutral density filter Φ45mm	○
附件 Attachment	Φ45mm ND25 中性滤色片 ND25 Neutral density filter Φ45mm 摄像附件 Video attachment 0.01mm 测微尺 0.01mm Micrometer	○

注：●为标准配置，○为选购配件 Note: ● Standard Outfit, ○ Optional

BM2100POL 系列偏光显微镜 Polarizing Microscope BM2100POL Series

性能

- 采用无限远平场光学系统，
- 广泛应用于地质学、矿物学以及化石燃料勘探等领域。
- 可实现单偏光、正交偏光、锥光等三种模式偏光观察。

Features

- Excellent Infinite Optical System.
- Widely used in geology, Mineralogy, Fossil fuel exploration.
- Single polarization, othorgonal polarization or conoscopic observation is available.



BM2100POL (T)

BM2100POL (T/R)

技术参数 Specification

		BM2100POL (T)	BM2100POL (T/R)
观察系统 Viewing Head	铰链式双目观察头，倾角 30° Seidentopf binocular viewing head, Inclined at 30°	●	●
	铰链式三目观察头，倾角 30° Seidentopf trinocular viewing head, Inclined at 30°	○	○
目镜 Eyepiece	WF10X/20	●	●
	WF10X/20 十字目镜 Eyepiece WF10X/20 with cross hair	●	●
	WF10X/20 十字分划目镜 Eyepiece WF10X/20 with scale of cross hair	●	●
	网格板 Grid plate	●	●
无限远无应力平场 消色差物镜 Infinite Strain Free Plan Achromatic Objective	透射/反射物镜: 4X、10X Objective 4X, 10X for Transmitted / Reflected system	●	●
	透射物镜: 20X、40X、60X Objective 20X, 40X, 60X for Transmitted system	●	●
	透射物镜: 100X Objective 100X for Transmitted system	○	○
	反射物镜: 20X、40X、60X、100X Objective 20X, 40X, 60X, 100X for Reflected system	○	○
转换器 Nosepiece	内向式四孔转换器，中心可调（一孔固定，三孔可调） Backward quadruple nosepiece, Center adjustable	●	●
垂直照明器 Epi-Illuminator	12V/50W 卤素灯，亮度可调：可变孔径光阑/视场光阑 diaphragm, Brightness adjustable	●	●
	绿、灰滤色片，色温片和磨砂玻璃 Green, Gray filter and ground glass	●	●
检偏装置 Analyzer	0°-360°转动式检偏器 Rotatable analyzer with gradation 0°-360°	●	●
勃式镜 Bertrand Lens	勃式镜，可调中心，可调焦，可移出光路 Bertrand Lens, focus/center adjustable sliding in/out of optical path	●	●
光程补偿器 Optical Compensator	λ 试板（一级红），1/4λ 试板，石英楔子试板 λ Slip (First class red), 1/4λ Slip, Quartz wedge	●	●
圆型旋转载物台 Revolving Round Stage	直径 Φ160mm，刻度格值 1°，游标格值 6' Diameter Φ160mm, Graduated in 1° Increments, Minimum resolution 6' when using vernier scale	●	●
聚光镜 Condenser	NA0.9 阿贝式聚光镜带可变光阑 NA0.9 Abbe condenser with Iris diaphragm	●	●
焦距调节 Focusing	同轴粗微调焦机构，调焦范围 24mm，微调格值 0.002mm Coaxial coarse & fine adjustment, Range 24mm, Fine division 0.002mm	●	●
起偏装置 Polarizer	可 360° 转动，带色温片 360° Rotatable with Filter	●	●
照明系统 Illumination	12V/20W 卤素灯，亮度可调节（透射用） 12V/20W Halogen lamp, Brightness adjustable (Transmitted illumination)	●	●
	12V/20W 卤素灯，亮度可调节（反射用） 12V/ 50W Halogen lamp, Brightness adjustable (Reflected illumination)	●	●
附件 Accessories	照相附件 Photo Attachment	○	○
	0.4X C 接口 C Mount 0.4X	○	○
	2X 单反相机接口 2X SLR Camera adaptor	○	○
	机械移动尺，移动范围：30X40mm（含切片试片座） Mechanical stage, Moving rang 30X40mm	○	○
	压平机 Specimen presser	○	○
	测微尺 Micrometer	●	●
	色温片 Filter	●	●

注：●为标准配置，○为选购配件 Note: ● Standard Outfit, ○ Optional

PM6000偏光显微镜 Polarizing Microscope PM6000

性能

- 研究级透射/反射偏光显微镜。
- 广泛应用于晶体学、地质学、分析化学、医学、生物科学、法医、环境科学、制药、毒理学、石棉分析等领域。
- 无论是单偏光、正交偏光还是锥光观察，都可以提供清晰、锐利的图像。
- 可以进行定性分析、定量测量等教学研究工作。

Features

- Research-Level transmission/reflection microscope.
- Widely used in crystallography, Geology, Analytical chemistry, Medicine, Biology, Medical jurisprudence, Environmentalology, Pharmacy, Toxicology, Asbestos analysis and so on.
- Supply sharp and clear images by single polarization, othorgonal polarization or conoscopic observation.
- Can be used for educational researching like qualitative analysis and quantitative measurement.



PM6000

技术参数 Specification

		PM6000
观察头 Viewing Head	平拉式三目观察头，倾角 30° Sliding trinocular viewing head, Inclined at 30°	●
目镜 Eyepiece	WF10X/20 WF10X/20 十字目镜 Eyepiece WF10X/20 with cross hair	●
	WF10X/20 十字分划目镜 Eyepiece WF10X/20 with scale of cross hair	●
	网格板 Grid plate	●
物镜 Objective	无应力平场消色差物镜 4X、10X Strain free plan achromatic objective 4X、10X	●
	无应力平场消色差物镜（透射用）25X、40X、63X Strain free plan achromatic objective (Transmitted) 25X、40X、63X	●
	无应力平场消色差物镜（反射用）25X、40X、63X Strain free plan achromatic objective (Reflected) 25X、40X、63X	●
	灯室调校物镜 Lamp house adjustment objective	○
转换器 Nosepiece	内向式四孔转换器，中心可调（一孔固定，三孔可调） Backward quadruple nosepiece, Center adjustable	●
检偏装置 Analyzer	0°-90°转动式检偏器 Rotatable analyzer with gradation 0°-90°	●
勃式镜 Bertrand Lens	勃式镜，可调中心，可调焦，可移出光路 Bertrand lens, Sliding in/out of optical path	●
光程补偿器 Optical Compensator	λ 试板（一级红），1/4λ 试板，石英楔子试板 λ Slip (first class red), 1/4λ Slip, Quartz Wedge	●
圆型旋转载物台 Revolving Round Stage	直径 Φ160mm，刻度格值 1°，游标格值 6' Diameter Φ160mm, Graduated in 1° Increments, Minimum resolution 6' when using vernier scale	●
聚光镜 Condenser	NA1.25 阿贝式聚光镜带可变光阑和滤色片 NA1.25 Abbe condenser with iris diaphragm & filter	●
焦距调节 Focusing	同轴粗微调焦机构，调焦范围 26mm，微调格值 0.002mm Coaxial coarse & fine adjustment, Range 26mm, Fine division 0.002mm	●
起偏装置 Polarizer	可 360° 转动 360° Rotatable	●
照明系统 Illumination	12V/20W 卤素灯，亮度可调节（透射用） 12V/ 20W Halogen lamp, Brightness adjustable (Transmitted illumination)	●
	12V/50W 卤素灯，亮度可调节（反射用） 12V/ 50W Halogen lamp, Brightness adjustable (Reflected illumination)	●
附件 Accessories	C 型接口 0.5X C 接口	○
	C Mount 1X C 接口	○
	机械移动尺，移动范围：30X40mm（含切片试片座） Mechanical stage, Moving rang 30X40mm	○
	压平机 Specimen presser	○
	测微尺 Micrometer	●
	色温片 Filter	●

注：●为标准配置，○为选购配件 Note: ● Standard Outfit, ○ Optional

体视显微镜
Stereo Micro

宝石显微镜
Gem Micro

单筒连续变倍显微镜
Monocular Zoom Micro

金相显微镜
Metalurgical Micro

偏光显微镜
Polarizing Micro

便携式测量显微镜
Portable Measuring Micro

附件
Attachment

体视显微镜
Stereo Micro

宝石显微镜
Gem Micro

单筒连续变倍显微镜
Monocular Zoom Micro

金相显微镜
Metalurgical Micro

偏光显微镜
Polarizing Micro

便携式测量显微镜
Portable Measuring Micro

附件
Attachment

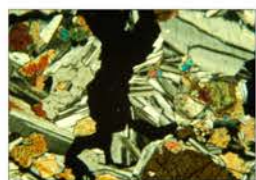
XPL-2系列偏光显微镜 Polarizing Microscope XPL-2

性能

- 常规检测用透射/反射偏光显微镜
- 广泛应用于晶体学、地质学、分析化学、医学、生物科学、法医、环境科学、制药、毒理学、石棉分析等领域。
- 可以进行单偏光、正交偏光、锥光观察。

Features

- Polarizing microscope for normal inspection and education.
- Widely used in crystallography, Geology, Analytical chemistry, Medicine, Biology, Environmentalology, Pharmacy, Toxicology, Asbestos analysis and so on.
- Single polarization, Othogonal polarization or conoscopic observation is available.



XPL-2

技术参数 Specification

		XPL-2
观察系统 Viewing Head	平拉式双目观察头, 倾角 45° Sliding binocular viewing head, Inclined at 45°	●
	平拉式三目观察头, 倾角 45° Sliding trinocular viewing head, Inclined at 45°	○
目镜 Eyepiece	WF10X/18	●
	WF10X/18 十字目镜 Eyepiece WF10X/18 with cross hair	●
	分划板 Reticle plate	●
	网格板 Grid plate	●
物镜 Objective	无应力消色差物镜 4X、10X、25X、40X、63X Strain free achromatic objective 4X、10X、25X、40X、63X	●
	无应力平场消色差物镜 25X、40X、63X Strain free plan achromatic objective 25X、40X、63X	●
	灯室调校物镜 Lamp house adjustment objective	○
	转换器 Nosepiece	内向式四孔转换器, 中心可调 Backward quadruple nosepiece, Center adjustable
检偏装置 Analyzer	0°-90°转动式检偏器 Rotatable analyzer with gradation 0°-90°	●
勃式镜 Bertrand Lens	勃式镜, 可调中心, 可调焦, 可移出光路 Bertrand lens, Sliding in/out of optical path	●
光程补偿器 Optical Compensator	λ 试板 (一级红), 1/4λ 试板, 石英楔子试板 λ Slip (first class red), 1/4λ Slip, Quartz wedge	●
圆型旋转载物台 Revolving Round Stage	直径 Φ160mm, 刻度格值 1°, 游标格值 6' Diameter Φ160mm, Graduated in 1° increments, Minimum resolution 6' when using vernier scale	●
聚光镜 Condenser	NA1.25 阿贝式聚光镜带可变光栏和滤色片 NA1.25 Abbe condenser with iris diaphragm & filter	●
焦距调节 Focusing	同轴粗微调焦机构, 调焦范围 26mm, 微调格值 0.002mm Coaxial coarse & fine adjustment, Range 26mm, Fine division 0.002mm	●
起偏装置 Polarizer	可 360° 转动 360° Rotatable	●
照明系统 Illumination	12V/20W 卤素灯, 亮度可调节 (透射用) 12V/ 20W Halogen Lamp, Brightness Adjustable (Transmitted illumination)	●
	12V/50W 卤素灯, 亮度可调节 (反射用) 12V/ 50W Halogen lamp, Brightness adjustable (Reflected illumination)	●
附件 Accessories	机械移动尺, 移动范围: 30X40mm (含切片试片座) Mechanical stage, Moving rang 30X40mm	○
	压平机 Specimen presser	○
	测微尺 Micrometer	●

注: ● 为标准配置, ○ 为选购配件 Note: ● Standard Outfit, ○ Optional

XP-221 偏光显微镜 Polarizing Microscope XP-221

性能

- 常规检测及教学用反射偏光显微镜。
- 广泛应用于岩石学、地质、矿物学、冶金、材料科学等领域。

Features

- Polarizing microscope for normal inspection and education.
- Widely used in petrology, geology, mineralogy, metallurgy, Materialogy and so on.



XP-221

技术参数 Specification

		XP-221
观察系统 Viewing Head	平拉式双目观察头, 倾角 45° Sliding binocular viewing head, Inclined at 45°	●
	平拉式三目观察头, 倾角 45° Sliding trinocular viewing head, Inclined at 45°	○
目镜 Eyepiece	WF10X/18	●
	WF10X/18 十字目镜 Eyepiece WF10X/18 with cross hair	●
	分划板 Reticle plate	●
	网格板 Grid plate	●
物镜 Objective	无应力消色差物镜 4X、10X Strain free achromatic objective 4X、10X	●
	无应力平场消色差物镜 25X、40X、63X Strain free plan achromatic objective 25X、40X、63X	●
	灯室调校物镜 Lamp house adjustment objective	○
	转换器 Nosepiece	内向式四孔转换器, 中心可调 (一孔固定, 三孔可调) Backward quadruple nosepiece, Center adjustable
检偏装置 Analyzer	0°-90°转动式检偏器 Rotatable analyzer with gradation 0°-90°	●
勃式镜 Bertrand Lens	勃式镜, 可调中心, 可调焦, 可移出光路 Bertrand lens, Sliding in/out of optical path	●
光程补偿器 Optical Compensator	λ 试板 (一级红), 1/4λ 试板, 石英楔子试板 λ Slip (First class red), 1/4λ Slip, Quartz wedge	●
圆型旋转载物台 Revolving Round Stage	直径 Φ160mm, 刻度格值 1°, 游标格值 6' Diameter Φ160mm, Graduated in 1° increments, Minimum resolution 6' when using vernier scale	●
焦距调节 Focusing	同轴粗微调焦机构, 调焦范围 26mm, 微调格值 0.002mm Coaxial coarse & fine adjustment, Range 26mm, Fine division 0.002mm	●
照明系统 Illumination	12V/50W 卤素灯, 亮度可调节 12V/ 50W Halogen lamp, Brightness adjustable	●
附件 Accessories	机械移动尺, 移动范围: 30X40mm (含切片试片座) Mechanical stage, Moving rang 30X40mm	○
	压平机 Specimen presser	○
	测微尺 Micrometer	●

注: ● 为标准配置, ○ 为选购配件 Note: ● Standard Outfit, ○ Optional

XP-213 偏光显微镜 Polarizing Microscope XP-213

性能

- 常规检测及教学用透射偏光显微镜。
- 广泛应用于晶体学、分析化学、医学、生物科学、环境科学、制药、毒理学等领域。
- 无论是单偏光、正交偏光还是锥光观察，都可以提供清晰、锐利的图像。

Features

- Polarizing microscope for normal inspection and education.
- Widely used in crystallography, Analytical chemistry, Medicine, Biology, Environmentalology, Pharmacy, Toxicology and so on.
- Supply sharp and clear images by single polarization, orthogonol polarization or conosopic observation.



XP-213

技术参数 Specification

		XP-213
观察系统 Viewing Head	平拉式双目观察头, 倾角 30° 平拉式三目观察头, 倾角 45°	● ○
目镜 Eyepiece	WF10X/18	●
	WF10X/18 十字目镜 Eyepiece WF10X/18 with cross hair	●
	分划板 Reticle plate	●
物镜 Objective	无应力消色差物镜 4X、10X、25X、40X、63X	●
	灯室调校物镜 Lamp house adjustment objective	○
转换器 Nosepiece	内向式四孔转换器, 中心可调 Backward quadruple nosepiece, Center adjustable	●
检偏装置 Analyzer	0°-90°转动式检偏器 Rotatable analyzer with gradation 0°-90°	●
勃式镜 Bertrand Lens	勃式镜, 可调中心, 可调焦, 可移出光路 Bertrand lens, Sliding in/out of optical path	●
光程补偿器 Optical Compensator	λ 试板 (一级红), 1/4λ 试板, 石英楔子试板 λ Slip (First class red), 1/4λ Slip, Quartz wedge	●
圆型旋转载物台 Revolving Round Stage	直径 Φ160mm, 刻度格值 1°, 游标格值 6' Diameter Φ160mm, Graduated in 1° increments, Minimum resolution 6' when using vernier scale	●
聚光镜 Condenser	NA1.25 阿贝式聚光镜带可变光栏和滤色片 NA1.25 Abbe condenser with iris diaphragm & filter	●
焦距调节 Focusing	同轴粗微调焦机构, 调焦范围 26mm, 微调格值 0.002mm Coaxial coarse & fine adjustment, Range 26mm, Fine division 0.002mm	●
起偏装置 Polarizer	可 360° 转动 360° Rotatable	●
照明系统 Illumination	6V/20W 卤素灯, 亮度可调节 (透射用) 6V/20W Halogen lamp, Brightness adjustable (Transmitted illumination)	●
附件 Accessories	机械移动尺, 移动范围: 30X40mm (含切片试片座) Mechanical stage, Moving rang 30X40mm	○
	压平机 Specimen presser	○
	测微尺 Micrometer	●
	蓝色滤色片 Blue filter	●

注: ● 为标准配置, ○ 为选购配件 Note: ● Standard Outfit, ○ Optional

NPL-400 偏光显微镜 Polarizing Microscope NPL-400 Series

性能

流线型、高稳定性的镜体设计, 使用方便、功能齐全, 适合于在单偏光、正交偏光及锥光下观察矿物的晶体形状、颜色、干涉色等, 并准确地鉴定各种矿物或其他晶体试样的光学性质。

Features

With the features of streamline and stable frame, easy operation and complete functions, polarizing microscope NPL-400 is the best choice for user to observe mineral crystal figure, color and interference color and also exactly identify the optical performance of mineral and other crystal specimen.



- 0° -90° 摆动式检偏器, 可摆出光路进行单偏光观察, 并配有 λ 试板、1/4λ 试板及石英楔子试板。
0°-90° Rotatable Analyzer and when out of optical path, Single Polarizing Observation is Available. λ Slip, 1/4λ Slip and Quartz Wedge are Equipped.
- 四孔转换器, 中心可调
Quadruple Nosepiece, Center Adjustable
- 起偏器可摆出光路; 6V/20W 卤素灯照明, 可调节亮度以及观察不同偏光下的标本。
Polarizer can be Swung out of Optical Path. 6V/20W Halogen Lamp Illumination, Brightness Adjustable.
- 可配置三目观察系统
Trinocular Observing is Available



NPL-400B

技术参数 Specification

		NPL-400B	NPL-400T
观察系统 Viewing Head	铰链式双目镜筒, 30° 倾斜, 360° 旋转 Seidentopf typy binocular head at 30°, 360° Rotatable 铰链式三目镜筒, 30° 倾斜, 360° 旋转 Seidentopf typy trinocular head at 30°, 360° Rotatable	●	●
目镜 Eyepiece	WF10X/18 带十字分划 Eyepiece WF10X/18 with scale of crosshair Eyepiece WF10X/18	●	●
物镜 Objective	无应力消色差物镜 4X、10X、40X、60X Strain free achromatic objective 4X、10X、40X、60X	●	●
转换器 Nosepiece	内向式四孔转换器, 中心可调 Backward quadruple nosepiece, Center adjustable	●	●
检偏装置 Analyzer	0°-90° 转动式检偏器 Rotatable analyzer with gradation 0°-90°	●	●
勃式镜 Bertrand Lens	勃式镜, 可移出光路 Bertrand lens, Sliding in/out of optical path	●	●
光程补偿器 Optical Compensator	λ 试板 (一级红), 1/4λ 试板, 石英楔子试板 λ Slip (first class red), 1/4λ Slip, Quartz wedge	●	●
圆型旋转载物台 Revolving Round Stage	直径 Φ160mm, 刻度格值 1°, 游标格值 6' Diameter Φ160mm, Graduated in 1° Increments, Minimum resolution 6' when using vernier scale	●	●
聚光镜 Condenser	NA1.25 阿贝式聚光镜带可变光栏和滤色片 NA1.25 Abbe condenser with iris diaphragm & Filter	●	●
焦距调节 Focusing	同轴粗微调焦机构, 调焦范围 28mm, 微调格值 0.002mm Coaxial coarse & fine adjustment, Range 28mm, Fine division 0.002mm	●	●
起偏装置 Polarizer	可摆出光路, 位于集光镜顶部 Sliding in/ out of optical path, Located on the top of collector	●	●
照明系统 Illumination	6V/20W 卤素灯, 亮度可调节 6V/20W Halogen lamp, Brightness adjustable	●	●

注: ● 为标准配置, ○ 为选购配件 Note: ● Standard Outfit, ○ Optional

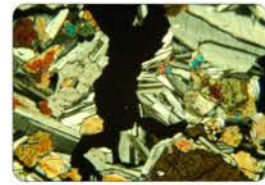
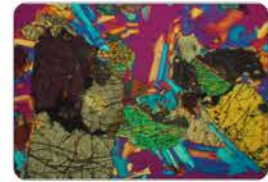
NPL-107系列偏光显微镜 Polarizing Microscope NPL-107 Series

性能

使用方便、功能齐全、经济实用。广泛应用于地质、石油、煤炭、化工、医疗、药品等领域的检验及高等院校相关专业的教学、科研工作。

Features

With the features of easy operation, complete functions and economy, it is an ideal instrument in geology, petroleum, coal, chemicals and physic fields. It is also widely used in academic demonstration and scientific research.



NPL-107B

技术参数 Specification

		NPL-107B	NPL-107T
观察系统 Viewing Head	平移式双目镜筒，45°倾斜，360°旋转 Sliding binocular head at 45°, 360° Rotatable	●	
	平移式三目镜筒，45°倾斜，360°旋转 Sliding trinocular head at 45°, 360° Rotatable		●
目镜 Eyepiece	WF10X/18 带十字分划 Eyepiece WF10X/ 18 with scale of crosshair	●	●
	WF10X/18	●	●
物镜 Objective	无应力消色差物镜 4X、10X、40X Strain free achromatic objective 4X、10X、40X	●	●
转换器 Nosepiece	四孔转换器，中心可调 Quadruple nosepiece, Center adjustable	●	●
检偏装置 Analyzer	0°-90°转动式检偏器 Rotatable analyzer with gradation 0°-90°	●	●
勃式镜 Bertrand Lens	勃式镜可移出光路 Bertrand lens, Sliding in/ out of optical path	●	●
光程补偿器 Optical Compensator	λ试板（一级红） λ Slip (First class red)	●	●
	1/4λ试板 1/4λ Slip	●	●
	石英楔子试板 Quartz wedge	●	●
圆型旋转载物台 Revolving Round Stage	直径Φ160mm，刻度格值1°，游标格值6' Diameter Φ160mm, Graduated in 1° increments, Minimum resolution 6' when using vernier scale	●	●
聚光镜 Condenser	NA1.25 阿贝式聚光镜带可变光栏和滤色片 Abbe Condenser with iris diaphragm & filter	●	●
焦距调节 Focusing	同轴粗微调焦机构，调焦范围 28mm，微调格值 0.002mm Coaxial coarse & fine adjustment, Range 28mm, Fine division 0.002mm	●	●
起偏装置 Polarizer	可摆出光路，位于集光镜顶部 Sliding in/ out of optical path, Located on the top of collector	●	●
照明系统 Illumination	6V/20W 卤素灯，亮度可调节 6V/ 20W Halogen lamp, Brightness adjustable	●	●

注：●为标准配置，○为选购配件 Note: ● Standard Outfit, ○ Optional

NP-400偏光显微镜 Polarizing Microscope NP-400 Series

性能

NP-400型偏光显微镜，可以在单偏光、正交偏光及锥光下观察矿物的晶体形状、颜色、干涉色等，并准确地鉴定各种矿物或其他试样薄片的光学性质。该产品使用方便、功能齐全，广泛地应用于地质、石油、煤炭、化工的化学纤维、医疗、药品等领域的检验及高等院校相关专业的教学、科研工作。

Features

Polarizing microscope NP-400 can observe mineral crystal figure, color and interference color and also identify its optical performance. It is a good microscope used in geology, petroleum, coal, Chemical fiber, medical treatment and physic inspection. It is also widely used in academic demonstration and research.



0°-90° 摆动式检偏器，可摆出光路进行单偏光观察，并配有 λ 试板、1/4 λ 试板及石英楔子试板。

0°-90° Rotatable Analyzer and when out of optical path, Single Polarizing Observation is Available. λ Slip, 1/4 λ Slip and Quartz Wedge are Equipped.



圆型旋转载物台，直径Φ145mm，360°等分刻度，游标格值6'

Revolving round stage Φ145mm, 360° rotatable and graduated in 1° increments, minimum resolution 6', when using vernier scale



起偏器可摆出光路：6V/20W 卤素灯照明，可调节亮度以及观察不同偏光下的标本。

Polarizer can be Swung out of Optical Path. 6V/ 20W Halogen Lamp Illumination, Brightness Adjustable.



NP-400B

技术参数 Specification

		NP-400M	NP-400B	NP-400T
观察系统 Viewing Head	单目镜筒，30°倾斜 Monocular head inclined at 30°	●		
	铰链式双目镜筒，30°倾斜 Seidentopf type binocular head inclined at 30°		●	
	铰链式三目镜筒，30°倾斜 Seidentopf type trinocular head inclined at 30°			●
目镜 Eyepiece	WF10X/18 带十字分划 Eyepiece WF10X/18 with scale of crosshair	●	●	●
	WF10X/18		●	●
物镜 Objective	无应力消色差物镜 4X、10X、40X、60X Strain free achromatic objective 4X、10X、40X、60x	●	●	●
转换器 Nosepiece	内向式四孔转换器 Backward quadruple nosepiece	●	●	●
检偏装置 Analyzer	0°-90°转动式检偏器 Rotatable analyzer with gradation 0°-90°	●	●	●
勃氏镜 Bertrand Lens	勃氏镜，可移出光路 Bertrand lens, sliding in/out of optical path	●	●	●
光程补偿器 Optical Compensator	λ试板（一级红），1/4λ试板，石英楔子试板 λ Slip (first class red), 1/4λ Slip quartz wedge	●	●	●
圆型旋转载物台 Revolving Round Stage	直径Φ145mm，360°等份刻度，游标格值6'，中心可调 Diameter Φ145mm, 360° rotatable and graduated in 1° increments, minimum resolution 6' when using vernier scale, center adjustable	●	●	●
聚光镜 Condenser	NA1.25 阿贝式聚光镜带可变光栏和滤色片 Abbe condenser NA1.25 with iris diaphragm & filter	●	●	●
焦距调节 Focusing	同轴粗微调焦机构，调焦范围 28mm，微调格值 0.002mm Coaxial coarse & fine adjustment, range 28mm, fine division 0.002	●	●	●
起偏装置 Polarizer	可摆出光路，位于集光镜顶部 Sliding in/out of optical path, located on the top of collector	●	●	●
照明系统 Illumination	6V/20W 卤素灯，亮度可调节 6V/ 20W Halogen lamp, brightness adjustable	●	●	●

注：●为标准配置，○为选购配件 Note: ● Standard Outfit, ○ Optional

体视显微镜
Stere Micro

宝石显微镜
Gem Micro

单筒连续变倍显微镜
Monocular Zoom Micro

金相显微镜
Metalurgical Micro

偏光显微镜
Polarizing Micro

便携式测量显微镜
Portable Measuring Micro

附件
Attachment

体视显微镜
Stere Micro

宝石显微镜
Gem Micro

单筒连续变倍显微镜
Monocular Zoom Micro

金相显微镜
Metalurgical Micro

偏光显微镜
Polarizing Micro

便携式测量显微镜
Portable Measuring Micro

附件
Attachment

NP-107系列偏光显微镜 Polarizing Microscope NP-107 Series

性能

使用方便、功能齐全、经济实用。广泛应用于地质、石油、煤炭、化工、医疗、药品等领域地检验及高等院校相关专业地教学、科研工作。

Features

With the features of easy operation, complete functions and economy, it is ideal instrument in geology, petroleum, coal, chemicals and physic fields. It is also widely used in academic demonstration and research.



NP-107B

技术参数 Specification

		NP-107M	NP-107B	NP-107T
观察系统 Viewing Head	单目镜筒，45°倾斜 Monocular head inclined at 45°	●		
	平移式双目镜筒，45°倾斜 Sliding binocular head inclined at 45°		●	
	平移式三目镜筒，45°倾斜 Sliding trinocular head inclined at 45°			●
目镜 Eyepiece	WF10X/18 带十字分划 Eyepiece WF10X/18 with scale of crosshair	●	●	●
	WF10X/18		●	●
物镜 Objective	无应力消色差物镜 4X、10X、40X	●	●	●
	Strain free achromatic objective 4X、10X、40X			
转换器 Nosepiece	外向式四孔转换器 Toward quadruple nosepiece	●	●	●
检偏装置 Analyzer	0°—90°摆动式检偏装置 Rotatable analyzer with graduation 0°—90°	●	●	●
勃氏镜 Bertrand Lens	勃氏镜可移出光路 Bertrand lens, Sliding in/ out of optical path	●	●	●
光程补偿镜 Optical Compensator	λ试板（一级红） λ Slip (First class red)	●	●	●
	1/4λ试板 1/4λ Slip	●	●	●
圆型旋转载物台 Revolving Round Stage	直径φ135mm，刻度格值1°，游标格值6′，中心可调 Diameterφ135mm, 360°Rotatable and graduate in 1°Increments, Minimum resolution 6'when using venire scale, Center adjustable	●	●	●
聚光镜 Condenser	NA1.25 阿贝式聚光镜带可变光栏和滤色片 Abbe Condenser NA1.25 with Iris diaphragm & filter	●	●	●
焦距调节 Focusing	同轴粗微调焦机构，调焦范围28mm，微调格值0.002mm Coaxial coarse & fine adjustment, range 28mm, fine division 0.002	●	●	●
起偏装置 Polarizer	可摆出光路，位于集光镜顶部 Sliding in/out of optical path, Located on the top of collector	●	●	●
照明系统 Illumination	6V/20W 卤素灯，亮度可调节 6V/20W Halogen lamp, Brightness adjustable	●	●	●

注：●为标准配置，○为选购配件 Note: ● Standard Outfit, ○ Optional

NP-107A偏光显微镜 Polarizing Microscope NP-107A Series

性能

使用方便、功能齐全、经济实用。广泛应用于地质、石油、煤炭、化工、医疗、药品等领域的检验及高等院校相关专业的教学、科研工作。

Features

With the features of easy operation, complete functions and economy, it is ideal instrument in geology, petroleum, coal, chemicals and physic fields. It is also widely used in academic demonstration and research.



NP-107A

技术参数 Specification

		NP-107A
观察系统 Viewing Head	单目镜筒，45°倾斜，360°旋转 Monocular head at 45°, 360° Readable	●
目镜 Eyepiece	WF10X 带十字分划 Eyepiece WF10X with scale of crosshair	●
物镜 Objective	无应力消色差物镜 4X、10X、40X Strain free achromatic objective 4X、10X、40X	●
转换器 Nosepiece	外向式四孔转换器 Toward quadruple nosepiece	●
检偏装置 Analyzer	固定式检偏装置 Fixed analyzer	●
勃氏镜 Bertrand Lens	勃氏镜，可移出光路 Bertrand lens, Sliding in/ out of optical path	●
光程补偿镜 Optical Compensator	λ试板（一级红） λ Slip (First class red)	●
圆型旋转载物台 Revolving Round Stage	直径φ135mm，刻度格值1°，游标格值6′，中心可调 Diameter φ135mm, 360° Rotatable and graduate in 1° Increments, Minimum resolution 6'when using venire scale, Center adjustable	●
聚光镜 Condenser	NA1.25 阿贝式聚光镜带可变光栏和滤色片 Abbe Condenser with iris diaphragm & Filter	●
调焦系统 Focusing	同轴粗微调焦机构，调焦范围28mm，微调格值0.002mm Coaxial coarse & fine adjustment, Range 28mm, Fine division 0.002	●
起偏装置 Polarize	推进式，可0°—90°偏振方向转动，位于集光镜顶部 0°—90° Rotatable located on the top of collector	●
照明系统 Illumination	6V/20W 卤素灯，亮度可调节 6V/ 20W Halogen lamp, Brightness adjustable	●

注：●为标准配置，○为选购配件 Note: ● Standard Outfit, ○ Optional

XPT-7 偏光显微镜 Polarizing Microscope XPT-7

性能

- 教学用透射偏光显微镜。
- 广泛应用于晶体学、分析化学、医学、生物科学、环境科学、制药、毒理学等领域。偏光影像同样锐利、清晰。

Features

- Polarizing microscope for education.
- Widely used in crystallography, Analytical chemistry, Medicine, Biology, Environmentalology, Pharmacy, Toxicology and so on.
- Supply sharp and clear images.



XPT-7

技术参数 Specification

		XPT-7
目镜 Eyepiece	WF10X/18 十字目镜 Eyepiece WF10X/18 with cross hair	●
	WF10X/18 十字分划目镜 Eyepiece WF10X/18 with scale of cross hair	●
	网格板 Grid plate	●
	WF5X/20 十字目镜 Eyepiece WF5X/20 with cross hair	●
物镜 Objective	无应力消色差物镜 4X、10X、25X、40X、63X	●
	Strain free achromatic objective 4X、10X、25X、40X、63X	●
勃式镜 Bertrand Lens	勃式镜, 可调中心, 可移出光路 Bertrand lens, Sliding in/out of optical path	●
光程补偿器 Optical Compensator	λ 试板 (一级红), 1/4λ 试板, 石英楔子试板 λ Slip (first class red), 1/4λ Slip, Quartz wedge	●
圆型旋转载物台 Revolving Round Stage	直径 Φ130mm, 刻度格值 1°, 游标格值 6' Diameter Φ130mm, Graduated in 1° increments, Minimum resolution 6' when using vernier scale	●
聚光镜 Condenser	NA1.25 阿贝式聚光镜带可变光栏和滤色片	●
	NA1.25 Abbe condenser with iris diaphragm & filter	●
起偏装置 Polarizer	可 360° 转动, 位于集光镜顶部 360° Rotatable, Located on the top of collector	●
照明系统 Illumination	6V/15W 卤素灯, 亮度可调节 (透射用)	●
	6V/ 15W Halogen lamp, Brightness adjustable (Transmitted illumination)	●
附件 Accessories	测微尺 0.01mm Micrometer 0.01mm	●
	蓝色滤色片 Blue filter	●

注: ● 为标准配置, ○ 为选购配件 Note: ● Standard Outfit, ○ Optional

XC系列便携式测量显微镜 Portable Measuring Microscope XC Series

性能

便携式测量显微镜能广泛应用于工厂生产现场的检验测量和实验室的观察研究, 尤其适用于机械制造业, 纸张制造业, 印刷业, 纺织业等的生产现场检查。该产品体积小, 重量轻, 造型新颖, 操作简便, 也可供学生实验使用。

Features

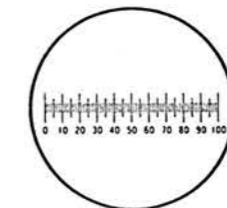
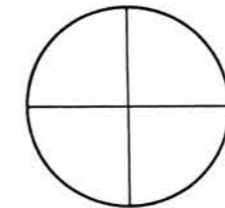
The portable measuring microscope is used for measuring or viewing purposes in production or laboratory. It is particularly suitable for spot examination of machinery industry, paper making, print and textile, etc. The product features small size, light weight, nice design and easy operation. It is also suitable to be used by students.



XC-100, XC-100L
XC-50, XC-50L
XC-40, XC-40L
XC-20, XC-20L

	XC-100 (L)	XC-50 (L)	XC-40 (L)	XC-20 (L)
总放大倍率 Total Magnification	100×	50×	40×	20×
机械筒长 Mechanical Tube Length	160mm			
目镜 Eyepiece	10×			
物镜 Objective	10×	5×	4×	2×
数值孔径 Numerical Aperture	0.25	0.12	0.1	0.05
目镜视场直径 Diameter of Viewing field in Eyepiece	Φ18mm			
目镜分划板 Reticule of Eyepiece	0.1mm			
格值 Minimum Readable Division	0.01mm	0.02mm	0.025mm	0.05mm
工作距离 Working Distance	6.93mm	17.6mm	18mm	17.2mm
调焦范围 Focus Range	30mm			
底座直径 Diameter of Bearing Plane	Φ63mm			
整机高度 Height of Microscope	210mm			
整机重量 Mass of Microscope	650g			
照明光源 Illumination	笔灯, 使用二节 7 号干电池 Pen light, No.2 battery			

不同形式的目镜分划板, 适用于不同场合的需求
Various of Reticules for Eyepiece to Meet Different Requirements



带视度调节的10X分划目镜
10X Eyepiece with reticule and diopter adjustment

体视显微镜附件 Stereo Microscope Accessories

体视显微镜机架 Stands of Stereo Microscope



NSZ-F2

NSZ-F3

NSZ-F7

NSZ-F8



NSZ-F9

NSZ-F10

NSZ-F11

NSZ-F13



SE-2000

SE-4000

NSZ-F12



托架
Arm



架台
Stand

万向架台
Universal Stand

活动铰链



C-PS

C-PSC

C-DS

以上三种机架仅限中国地区销售
These three stands only sold in China

万能机架 Universal table stand



NSZ-F1

NSZ-F4

珠宝附件 Gem Accessory



手推式移动平台
Movable stage

暗场附件 (观察珠宝用)
Darkfield for gem observation

偏光装置
Polarization Set

珠宝夹
Gem clamp

斜照明光源



环形照明光源 Annular Illuminator



LED

荧光灯
Fluorescent lamps

体视显微镜
Stereo Micro

宝石显微镜
Gem Micro

单筒连续变倍显微镜
Monocular Zoom Micro

金相显微镜
Metalurgical Micro

偏光显微镜
Polarizing Micro

便携式测量显微镜
Portable Measuring Micro

附件
Attachment

体视显微镜
Stereo Micro

宝石显微镜
Gem Micro

单筒连续变倍显微镜
Monocular Zoom Micro

金相显微镜
Metalurgical Micro

偏光显微镜
Polarizing Micro

便携式测量显微镜
Portable Measuring Micro

附件
Attachment